

TOI MĀORI AOTEAROA – MĀORI ARTS NEW ZEALAND

# ANNUAL REPORT 2022





## CONTENTS

- 5** A Message from the  
Toi Māori Aotearoa Chairperson:  
Trevor Horowaewae Maxwell CNZM
- 7** A Message from Te Tumu Whakarae:  
Tamahou Temara
- 8** Toi Māori Aotearoa – Māori Arts New Zealand  
About Us
- 10** Kaupapa Toi Māori
- 17** Toi Māori Ki Te Kāinga:  
2022 Highlights
- 29** Toi Māori Gallery
- 32** Our Committees
- 44** Financial Highlights 2022

***Toa I (2020) and Toa II (2022)***  
*by Baye Riddell*  
*Earthenware*  
*Presented in the Toi Māori Gallery*  
*2022 Aotearoa Art Fair*



**Toi Māori Aotearoa Board of Trustees meeting  
Te Pito, Toihoukura, Gisborne, 9 December 2022**

*(Back l-r): Tamahou Temara, Lady Rose Gould-Lardelli,  
Robert Gabel, Sir Professor Derek Lardelli*

*(Front l-r); Ranui Ngarimu ONZM, Trevor Maxwell CNZM, Tracey Morgan*



**(l-r): Sir Derek Lardelli, Tamahou Temara, Trevor Maxwell**  
*Toihoukura, Gisborne, 8 December 2022*

## A MESSAGE FROM THE TOI MĀORI AOTEAROA CHAIRPERSON

As a founding settlor and original board member, I have been honoured to continuously serve Toi Māori Aotearoa and support the development of Māori art and artists since 1996.

The arrival of COVID in February 2020 significantly disrupted our operations. Yet, we relied on the strength and longevity of our structure to safely pursue kaupapa toi Māori in Aotearoa and maintain our relationships abroad.

However, it is fair to say that 2022 brought new challenges and frustrations as we tried to push forward while actively managing COVID in the community. I am very proud of our tireless efforts to collaborate, adapt, test, and, where required, postpone, to ensure both the integrity of our kaupapa and the safety of those involved.

With the arrival of spring, by which time every whānau in Aotearoa had been affected by COVID in some way, we saw a new and resilient attitude begin to emerge and a greater desire to resume business as usual. Despite the relaxation of border controls and gathering limits, we maintained a cautious approach, fully aware of the disproportionate impact of COVID on Māori, the continued need to protect our kaumātua (despite their intrepid and sometimes cavalier attitudes!) and vulnerable whānau members.

With these values at the forefront of planning, our national network of Māori artists ploughed on and I would like to pay tribute to the clarity of their priorities as evidenced by the activities highlighted in this report.

On behalf of the Toi Māori Board of Trustees, I would also like to acknowledge the fine leadership of Tamahou Temara, a long-serving Toi Māori staff member who has excelled in his role as Te Tumu Whakarae. We are grateful for his open and generous management style and willingness to engage widely on kaupapa toi Māori.

While we adapt to living with COVID, there are valuable experiences and initiatives that we will carry forward. These include closer working relationships with other organisations to deliver projects in challenging circumstances and greater appreciation for the ability to meet kanohi ki te kanohi. Indeed I am looking forward to our first in-person Annual General Meeting, the first in three years, national gatherings of Māori artists and re-engaging with our Dutch waka partners in Leiden, The Netherlands in 2023.

Ngā mihi nui,  
**TREVOR HOROWAEWAE MAXWELL CNZM**



**Wahaika (2022)**

by Lewis Gardiner

Pounamu, muka

Presented in the Toi Māori Gallery

2022 Aotearoa Art Fair

**A MESSAGE FROM THE  
TOI MĀORI AOTEAROA  
TUMU WHAKARAE**

Tēnā tātau katoa e noho manemane nei i roto i ō tātau kāinga maha puta noa i Aotearoa.

Ko te tau tuatoru tēnei o te mate korona me ōna momo katoa e karawhiu ana i te motu, tae noa ki te ao whānui. E kore e tāea te aha, engari e hīkaka ana tātau katoa ki te ārai atu i te mate nei hei haumarutanga mo tātau katoa.

E rīringi ana ngā roimata ki ngā mate o te wā, o te marama, o te tau e hinga tonu nei. Rātou te hunga kua takahi i te ara whānui a Tāne, e tangi tawhiti ana nā runga i ngā raru o te wā. Te hunga kua haoa e Pōhutukawa, ā, takitahi ai ki te Kāhui o Matariki, te whetū o te tau hou māori. Tau ārai o te pō, tītoko ki te ao marama, ka hoki mai ki a tātau te hunga ora, tihei mauriora!

2022 was another challenging year with the pandemic. Programmes and national hui activities were affected, leading to postponements and rescheduling. Despite these challenges and disruptions, Toi Māori continued to work within the Government's COVID protection framework to deliver high quality kaupapa toi māori in a safe environment, as demonstrated in the 2022 Toi Māori Annual Report.



Safety and the well-being of our artists, whānau, hapū and iwi was our main priority. The use of online platforms for hui and other māori arts kaupapa continued to be the main form of connection and communication, especially with our international connections of indigenous artists, institutions and museums. Kanohi ki kanohi hui were also conducted but were limited to small gatherings.

I also want to acknowledge our hardworking Toi Māori Board, National Committees and office staff for their support, āwhina and tautoko during another challenging year. We achieved many positive kaupapa in the face of adversity and challenges in 2022 and we still delivered to a high standard.

Nō reira e hoa mā, kia toi oho, toi ora, toi māori ki te kāinga, toi māori ki te ao.

Tamahou Temara  
**TUMU WHAKARAE | GENERAL MANAGER**

# TOI MĀORI AOTEAROA – MĀORI ARTS NEW ZEALAND

## OUR VISION

*Māori art is at the centre of New Zealand's arts and cultural identity*

## OUR MISSION

*To promote the uniqueness, quality, and cultural expression of Māori arts*



Toi Māori Aotearoa  
Māori Arts New Zealand  
Charity Registration: CC31150



Toi Māori Limited Group  
Charity Registration: CC32033



Toi Māori Market Limited  
Charity Registration: CC33879

## ABOUT US

Toi Māori Aotearoa – Māori Arts New Zealand was established as a Charitable Trust in 1996.

The inaugural Board of Trustees included Hirini Moko Mead (Chairman), Trevor Horowaewae Maxwell (Deputy Chair), Emily Schuster, Timoti Kāretu, Derek Fox, Waana Davis and Dame Georgina Kirby.

Their focus was to provide support to Māori artists and art collectives and advocate for increased government resourcing to Māori art development.

The founding structure of Toi Māori Aotearoa comprised eight national Māori art form committees: He Awhi Tikanga, Ngā Waka Federation, Pūtatangi, Te Ātinga, Te Hā, Te Hunga Taunaki Kaituhi Māori, Te Ope o Rehua and Te Roopu Raranga Whatu o Aotearoa. In 2000, Te Uhi ā Mataora and Rūnanga Whakairo were established, and in 2020, Te Hā and Ngā Pou Kaituhi Māori combined to form Te Hā o Ngā Pou Kaituhi Māori.

The Toi Māori Group also comprises Toi Māori Limited and Toi Māori Art Market. Toi Māori Limited (2005) was set up to administer exceptionally large and/or high risk projects. Toi Māori Market Ltd (2007) is an event company developed to produce the Toi Māori Art Market, a biennial celebration of contemporary Māori art.

## OUR OBJECTIVES

### Building networks

Connecting Māori artists through online communities, local, regional, national, international, and artform communities.

### Developing Māori artists

Providing advice, workshops, internships, residencies, and exchanges.

### Strengthening international links

Growing capacity, partnerships and indigenous networks.

### Growing audiences

Marketing through multi-media platforms, events, exhibitions, performance, and publications.



## KAUPAPA TOI MĀORI

*Mā te ū o ngā mahi Toi Māori ki runga i te kare o te wā ...  
ka mau tonu ōna whakāturanga*

*To keep our Māori Arts above the crest of time ...  
will ensure a continuation of their showcasing*

*Tēpene Mamaku*

Toi Māori works with Māori artists and across the arts and culture sector to support the development of Māori art and share Māori art with the world.

Through COVID, Toi Māori Aotearoa has maintained the 'Toi Māori ki te Kāinga' strategy. With COVID circulating in the community and vulnerable whānau at higher risk, Toi Māori Aotearoa respected local intelligence to postpone or safely deliver kaupapa toi Māori through smaller regular gatherings and digital engagement in 2022.

During our period of isolation and challenge, we have seen kaupapa Māori in Aotearoa rise to the fore—such as the first national commemoration of Matariki—and we have been honoured to support the celebration of Māori art excellence on a national stage and share Māori art with a wide-range of audiences.



**Rutene Gabel blesses Manaia, a new support boat for waka group Ngā Waka o Te Tai Tokerau.**

Photographer: Peter de Graaf, The Northern Advocate



**Hinemoana waka tētēkura**

Waitangi Waka Pageant

Haruru falls, Te Tii Beach, Waitangi, 2007

### Safeguarding Māori Art

Despite the challenges of regional lockdowns and community transmission of COVID, our Committees found new and inventive ways to practice their art forms and foster Māori art development.

In the week leading up to Waitangi Day, local, regional and national Māori leaders discouraged visitors to the region. One of the few events to occur at Waitangi on 6 February was the blessing of Manaia, a support boat gifted to Ngā Waka o Te Tai Tokerau by Coastguard New Zealand, which contributes to the waka safety policy of Ngā Waka Federation.

Toi Māori Aotearoa and Ngā Waka Toi have a long-standing relationship through the leadership of the late kaumātua, Tēpene Mamaku, his wife, Hine, and son, Taituha, and their ongoing care of Hinemoana waka tētēkura in Whakatāne. This waka is used for rangatahi training and kaihoe selection leading to the presentation of Hinemoana at Waitangi Day. Due to COVID, Hinemoana has been unable to travel to Waitangi since 2020. However, Ngā Waka Toi reconvened in the second half of 2022 for four weekend wānanga at Ruaihona marae to reinvigorate waka practises in the Mataatua region.

Te Ātinga successfully rolled out a year-long programme of activity intended to galvanise their leadership, stimulate their network and develop new relationships with regional Māori art communities (see Activity Highlights).



#### **Ngātokimatawhāorua Reunion**

Otangaroa Marae, June 2022

Photographer: Te Rawhitiroa Bosch



#### **Ringa Toi exhibition opening ceremony**

Rongomaraeroa Marae, Te Papa Tongarewa, Wellington

28 September - 9 October 2022



#### **Baye and Gemeaux Riddell**

Tokomaru Bay, February 2022

Photographer: Norm Heke



#### **Poroporoaki for Whiriwhiria exhibition**

(l-r): Tamahou Temara, Ezra Bevan, Hinepuororangi Tahupārae, Sonia Snowden, Tracey Patete, Pip Devonshire, Elaine Bevan  
Toi Māori Gallery, Wellington, 19 August 2022

### **Celebrating Excellence in Māori Art**

On 4 June 2022, Ngā Waka Federation supported the 35 year commemoration of the 1987 journey of Ngātokimatawhāorua from Waitangi to Whangaroa Harbour. This gathering at Otangaroa marae saw kaihoe reconnect to reflect on the significance of their endeavour and contribution to the resurgence of waka in Aotearoa.

Toi Māori Aotearoa was proud to sponsor the Ngā Tohu Matariki o te Tau awards staged by Whakaata Māori and held at Te Papa Tongarewa on 15 June 2022. With Troy Kingi, Te Tumu Whakarae presented the Tipuārangi award to Rob Ruha for services to waiata Māori and rangatahi, and went on to receive the supreme award, Ngā Mata o te Ariki Tawhirimātea given by Kiingi Tūheitia Pōtatau Te Wherowhero VII. “Ka hao i runga, ka hao i raro, ka hao i te manawa.”

Rangi Kipa was also acknowledged at the 2022 Wellington Architecture Awards with the Ath Cup—named for the late architect Sir Ian Athfield—for his significant design contributions to Te Whanganui-ā-Tara. Rangi’s work on behalf of mana whenua was acknowledged as “skilful, intelligent, and critical to

the success of so many projects in this city.” As Rangi was unable to attend the ceremony, Te Tumu Whakarae accepted the award on his behalf: “Rangi is all about creating pathways for our people and breaking new barriers.”

Toi Māori Aotearoa also supported the presentation of the NZQA *Ringatoi* exhibition, held for the first time at Rongomaraeroa at Te Papa Tongarewa (28 September – 9 October 2022), which promotes excellence in mahi toi by secondary school students in Aotearoa. The exhibition featured more than 80 art works from 22 participating schools and introduced a new generation of artists working in raranga, whakairo, mahi-tā, whakapakoko and mahi-matihiko.

Puawai Cairns, Director Audience and Insights at Te Papa Tongarewa remarked, “walking around the Ringa Toi exhibition ... with works from students of toi across the country ... a part of me thinks that this is exactly what our first Kaihautū Cliff Whiting wanted when he was building the marae. To celebrate Toi Māori in all its facts, with all its different markers.”

### **Sharing Māori Art**

Toi Māori Aotearoa works with other organisations on initiatives that advance Māori development and share Māori art with new and broad audiences.

Through COVID, Toi Māori Aotearoa has worked with Te Papa Press to support Baye Riddell as the principal author of the forthcoming publication *Ngā Kaihanga Uku: Māori Clay Art* (due for release in 2023). Perhaps the most ideal of COVID projects, though disrupted by extreme weather events at Baye’s home and studio in Tokomaru Bay, this publication lays down the history of Māori clay practices, the evolution of Ngā Kaihanga Uku kaupapa and their international fraternity of indigenous clay artists. Biographies of senior artists and profiles of the next generation are illustrated by nearly three decades of photography by Norm Heke. As we excitedly await the release of the book, we would like to acknowledge the enormous endeavour of Baye Riddell and the unwavering support of his wife, Gemeaux Riddell, through this three-year journey.

The momentum of the Toi Māori Gallery was disrupted by community transmission of COVID in the first half-year and suspended in the second half-year due to the relocation of the Toi Māori office to allow earthquake strengthening building work. Nevertheless, we achieved two excellent exhibitions, *Whiriwhiria* and the 2022 Aotearoa Art Fair, which set new standards of digital delivery and online promotion, achieved high value sales, national media coverage, positive reviews and further opportunities for participating artists (see Activity Highlights).

# TOI MĀORI 2022 QUICK FACTS

We were involved in 95 sector engagements with 38 organisations to promote Māori artists and advance Māori art.



Presenting the Tipuārangi award with Troy Kingi, Ngā Tohu Matariki o Te Tau, Te Papa Tongarewa, 15 June 2022



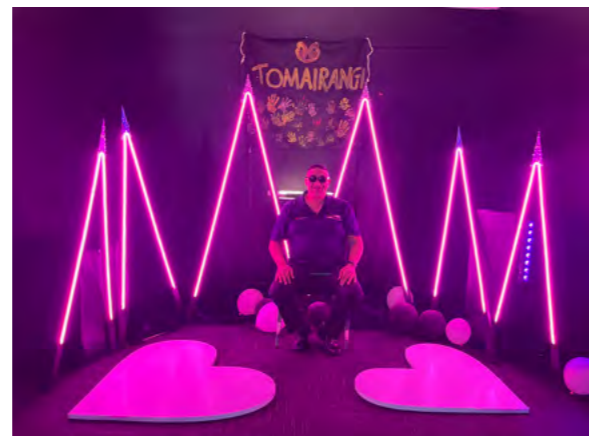
Opening the contemporary Native American art exhibition at the US Ambassadors Residence Lower Hutt, 24 August 2022



Installing Lionel Grant's Our Lady sculpture with John Gow of Gow Langsford Gallery, Aotearoa Art Fair, 14 November 2022



Supporting Rawhiti Waiti when receiving moko from Derek Lardelli Aotearoa Art Fair, 19 November 2022



Enjoying Hoesa! Gallery, Gisborne, 8 December 2022

We produced and published 29 Māori artist profiles on our website and promoted these online—and you loved it!

### You congratulated Rangi Kipa

Carrinya Feaunati presenting the Ath Cup, Wellington Architecture Awards 2022



1,444 likes, 17,968 shares, 54 reposts

Hemi Haddon Well deserved Rangi Kei runga koe e hoa. All the years of dedication to Toi Māori have honed your multiple approaches, and skill. To a point to where you can turn your hand to Architecture and receive an illustrious award. Mauri ora.

### You shared the legacy of Emily Schuster

Emily Schuster at Hinemihi 1992. Photographer: Jim Barr



961 likes, 25,576 shares, 83 reposts

Kim Kahu As a 10 year old child I remember visiting the centr in Rotorua and being totally absorbed by the piupiu weaving that was being done. The weaving at that time was being done behind a cordoned off rope. The Whaea that was weaving asked me if I would like to step over and help with the piupiu. I was in heaven. I believe that lady was Whaea Emily. I also remember an American man with a cowboy hat taking photos of us. I didn't know it at the time, but that was to be the beginning of my real passion for weaving, so thank you whaea

### You showed respect for Hirini Melbourne

Hirini Sydney Melbourne, EIT, Havelock North, 1994



857 likes, 22,718 shares, 62 reposts

Ria Hall And his compositions are still the bedrock for Māori music today! He tipua, he tuahangata!

### You cherished Sonia Snowden

Sonia Snowden, Ngā Here o te Ao exhibition, Te Papa Tongarewa, 2000. Photographed by Norm Heke



987 likes, 22,455 shares, 73 reposts

Rini Tutehira How lucky are we to have our kuia.

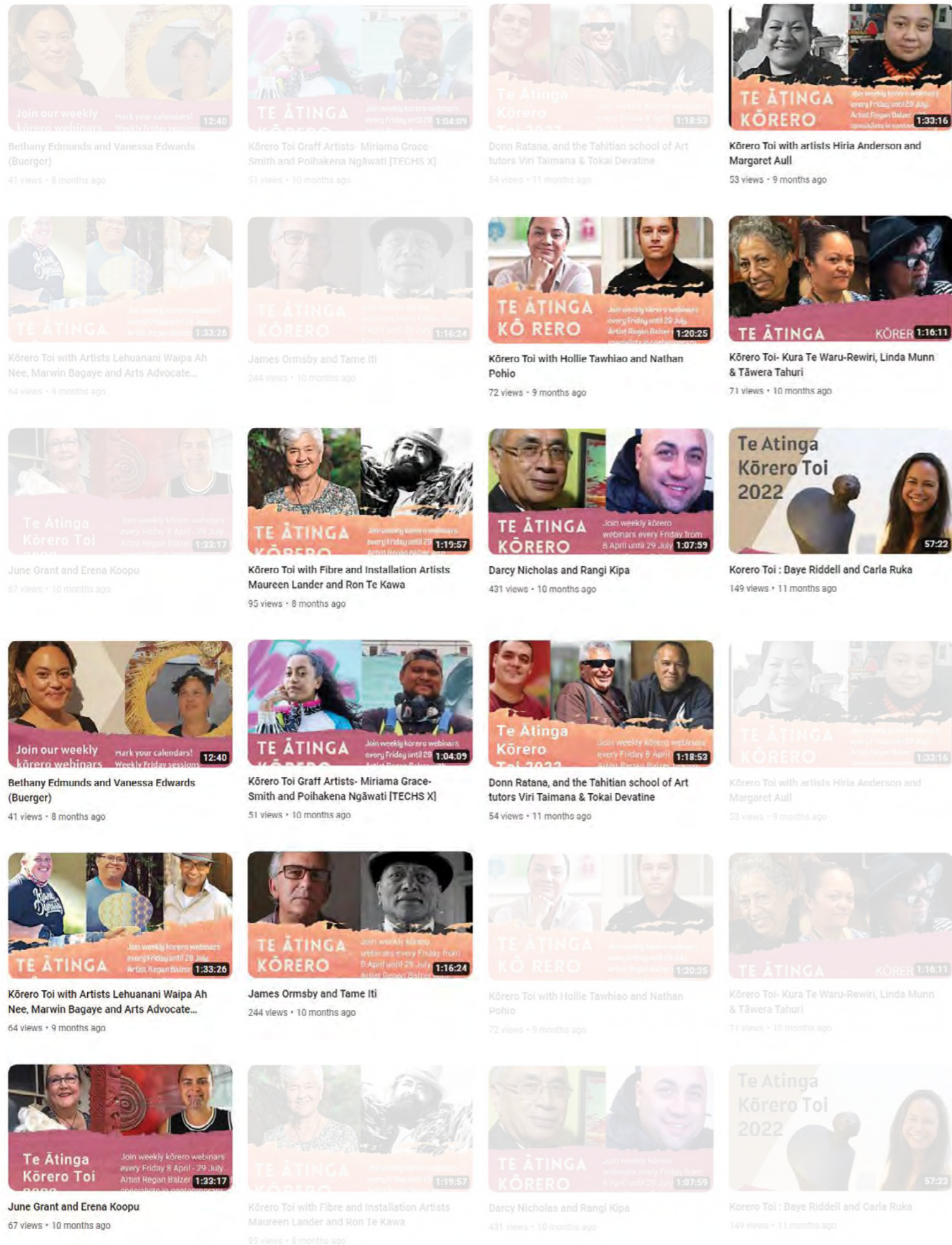




# — TOI MĀORI KITE KAINGA

## 2022 HIGHLIGHTS

*Te Ātinga Toi Ki Waikato hui-a-rohe*  
*Maungatautari marae, Waikato*  
*20 August 2022*



# TE ĀTINGA



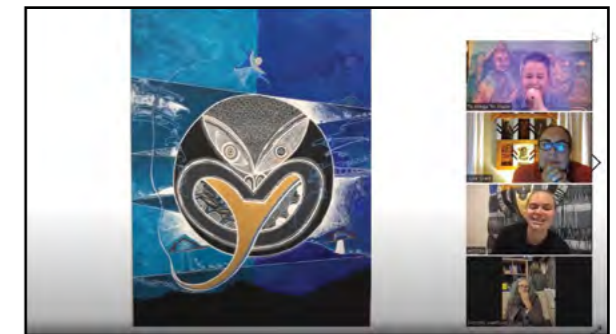
## Toi Kōrero 8 April – 29 July 2022

On 8 April 2022, Te Ātinga launched the first of their 'Toi Kōrero' online artist interview series. Facilitated by Regan Balzer, Tāwera Tahuri and Dorothy Waetford, 'Toi Kōrero' involved live weekly online conversations with more than 20 Māori artists and indigenous artist friends staged every Friday evening until 29 July 2022.

The focus of the series was to collect stories from artists connected to Te Ātinga and foster an online community during COVID restrictions, which included artists and viewers from the Northwest Coast of America and Canada, the Pacific and Aotearoa.

This initiative has been a great reminder of the importance of relationships and captures the rich knowledge conveyed through kōrero, with the sessions recorded and archived on the Te Ātinga Toi Māori YouTube channel.

[youtube.com/@teatingatoimoaori3807](https://youtube.com/@teatingatoimoaori3807)



**Top: Kōrero Toi with June Grant and Erena Koopu**  
6 May 2022



**Bottom: Kōrero Toi with Hawaiian artist, Lehuanani Waipa Ah Nee, Native American artist, Marwin Bagaye and Indigenous Arts Advocate Advocate Mario Caro**  
17 June 2022



**Whakawhanaungatanga hui-a-rohe**  
Raglan Kōkiri Arts Centre, Whāingaroa  
6-8 May 2022

**Whakawhanaungatanga hui-a-rohe**  
**6-8 May 2022**

After a period of incubation brought on by COVID, Te Ātinga activated long-term succession planning and a change of guard. The energy and ideas of eight new members alighted at a hui at the Raglan Kōkiri Arts Centre—their first kanohi ki te kanohi since the ‘Pūhoro o mua, Pūhoro ki tua’ Indigenous Arts Gathering in 2019.

Focused on whanaungatanga and strategic planning, the hui realised the vision statement ‘Pūhoro māea, Pūhoro manea’ (manifesting vision, artistic excellence) honouring the tohu given to Te Ātinga by Sandy Adsett, and mobilised the regional committee structure to co-ordinate a programme of hui-a-rohe identifying needs and talent in different regions to feed national and international opportunities on the horizon.

**Hui-a-rohe wānanga programme**  
**July - November 2022**

The objective of the 2022 Te Ātinga Hui-a-Rohe wānanga programme was to build leadership capacity within Te Ātinga and enable the regional Committee representatives to strengthen relationships with Māori artists in their area.

Across five hui, regional Committee representatives engaged their local networks in a range of activities and events, including exhibitions, workshops, seminars and field trips.

This programme also built a foundation for the next cycle of hui-a-rohe involving rangatahi in 2023.



**Top: Te Ātinga ki Whanganui hui-a-rohe**  
Whanganui Community Arts Centre  
9 July 2022

**Centre: Te Ātinga ki Te Tai Tokerau hui-a-rohe**  
Waitangi Museum, Waitangi  
10 September 2022

**Bottom: Te Ātinga ki Wairarapa hui-a-rohe**  
Kohunui marae, Pirinoa  
30 November 2022

## NGĀ WAKA FEDERATION



### Te Hono ki Aotearoa kaihoe engagement Leiden, The Netherlands August 2022

After the suspension of Toi Māori international travel in February 2020, two weeks before the first national lockdown, it was rather fitting that our intrepid kaihautū, kaiurungi and kaihoe of Ngā Waka Federation were the first to re-engage in international exchange with the support of Toi Māori Aotearoa.

The World Waka Ama Championships at Windsor, London, allowed Te Hono ki Aotearoa kaihoe to re-engage with their Dutch partners. Seasoned veterans Robert Gabel, Rutene Gabel and Anaru Irwin met with Dutch kaihoe in London and then travelled to visit the waka and staff at the Museum Volkenkunde in Leiden.

Ngā Waka Federation is looking forward to hosting Dutch kaihoe at Waitangi in 2023, followed by a return visit to Leiden later in the year.

### Manu Rere Moana and He Kaupapa Waka exhibition and seminar Te Papa Tongarewa 11-12 November 2022

Since 2021, Ngā Waka Federation has contributed to the development of the *He Kaupapa Waka* exhibition, which opened at Te Papa Tongarewa on 12 November 2022. An elaboration of the exhibition of photographs by Te Rāwhitiroa Bosch first exhibited at Te Kōngahu Museum at Waitangi in 2021, *Manu Rere Moana* and *He Kaupapa Waka* celebrate the complementary practices and communities of waka hourua and waka taua. As part of an all-day programme of seminars on the first day of the exhibition, Te Rāwhitiroa Bosch facilitated a panel discussion with Te Tumu Whakarae and Ngā Waka Federation representatives, joined by Tiki Taane as the creator of the multi-layered exhibition soundscape, which conveyed the deep knowledge, expert skill and collaborative efforts involved in waka practises.



**Top: Rutene and Robert Gabel with Dutch kaihoe and Te Hono ki Aotearoa, Museum Volkenkunde**  
Te Rurunga Wharewaka, Museum Volkenkunde, Leiden,  
The Netherlands, 11 August 2022

**Bottom: He Kaupapa Waka panel talk**  
(l-r): Tamahou Temara, Rutene Gabel, Hine Waitai-Dye,  
Robert Gabel, Joe Conrad, Robbie Whiu, Te Rāwhitiroa Bosch  
Soundings Theatre, Te Papa Tongarewa  
12 November 2022



**Back row (l-r): Viv and Riki Manuel, Maia Gibbs,  
Sir Professor Derek and Lady Rose Gould-Lardelli, Fatty  
Karauria, Joni Brooking, Steve Smith, Raniera McGrath,  
Tamahou Temara, Ngaire Tuhua**  
**Front row (l-r) Makarini Solomon, Henare Brooking**  
Te Pito, Toihoukura, Gisborne

## TE UHI Ā MATAORA



### Tū ā Rangi moko wānanga

#### Toihoukura Māori Visual Art and Design School Tairāwhiti

12 – 16 September 2022

Members of Te Uhi ā Mataora gathered in Tairāwhiti to express their talent through the tradition of tā moko and share ideas about the development of the moko movement.

The first Tū a Rangi moko wānanga to be held since the arrival of COVID in Aotearoa and staged in conjunction with Te Wiki o te Reo Māori, provided an opportunity for Te Uhi ā Mataora members—many of whom are Toihoukura alumni—to engage with current students.

As the art of moko is thriving and there are now several tā moko collectives operating in Aotearoa and overseas, the wānanga included a hui to analyse the health and safety of the art form and whether Te Uhi ā Mataora as a group was still relevant today.

The tā moko artists unanimously decided to keep Te Uhi ā Mataora intact as the base for mātauranga tā moko and to ensure that the tikanga is held within this grouping. Te Uhi ā Mataora also serves as an essential reference group, nationally and internationally, involving well-established tohunga responsible for reviving and leading this art form to where it is today.

Te Uhi ā Mataora also allocated wānanga space for kaupapa kōrero on the role of moko in reflecting Aotearoa New Zealand's growing diversity. Gender-specific moko practices and the role of permanent skin marking on non-indigenous people were debated, with this kaupapa developed further in Te Uhi ā Mataora mahi.



**Te Uhi ā Mataora Tū ā Rangi moko wānanga**  
Toihoukura Māori Visual Art and Design School

## TE HĀ O NGĀ POU KAITUHI MĀORI



### Verb Festival – Māori Writers Programme 3-6 November 2022

Since 2021 Te Hā o Ngā Pou Kaituhi Māori has partnered with Verb Wellington to deliver a Māori Writers Programme as part of the annual Verb Writers and Readers Festival staged at venues across the capital city.

In 2022, two co-curators, Rangimarie Sophie Jolly and Trinity Thompson-Browne, were selected to design and deliver our programme and created a beautiful, expansive and inclusive programme. Across six events over three days, grass roots, emerging, and new-to-the-stage writers were supported by established writers to craft an insulated space for the voices of kaituhi Māori.

The events included:

- Two panels, one for rangatahi to envision the future and one for established writers to discuss story sovereignty
- Two interviews, one about gender diversity and the other about creating visual arts and modes of adornment based on the characters we write about
- Two open mic events, one showcasing the mana of Māori female poets and the other a collaboration with Poetry with Brownies.

All of the events were well attended, especially the poetry readings, which were two of the most popular sessions within the whole Verb programme.

There were many learnings for our team, and we were able to collect a few key themes that will prove vital for the community of Māori writers:

- We are stronger together when we knowledge share.
- We have a wide range of perspectives, and it's important that our platforms are big enough to host these.
- Our rangatahi add value that illuminates the ara for our community in a way that emboldens where we have come and provides hope for where we're going.
- Partnerships are nuanced and require a delicate hand.

We would like to acknowledge the writers who were able to share their works publicly for the first time; Tarah Ah Kiau, Rangikaumoana Jackson, Mariwakiterangi Paekau, Jessie-Lee Robertson and Nadia Hineorangi Rose Solomon. We would also like to acknowledge first-time facilitator Meriana Johnsen and curators Trinity Thompson-Browne and Rangimarie Sophie Jolley.

Anahera Gildea and Nadine Hura  
Co-Chairs, Te Hā o Ngā Pou Kaituhi Māori



**Top: Verb Festival, 'Te Paepae Rangatahi', Trinity Thompson-Browne, Nadia Hineorangi Solomon, Mariwakiterangi Paekau, Meriana Johnsen**

5 November 2022, Meow Wellington

**Bottom: Verb Festival LitCrawl, 'Whai Kupu, Whai Kākahu', Rangimarie Sophie Jolley and Whiti Hereaka**

5 November 2022, Hunters & Collectors, Wellington



## TOI MĀORI GALLERY

### Whiriwhiria

31 March - 2 September 2022

Sonia Snowden, Manu Carkeek, Diane Prince, Karl Leonard, Kōhai Grace, Elaine Bevan, Tracey Morgan, Hinepuororangi Tahupārae, Tracey Patete, Matene Climie, Charlene Fraser, Shainey Moreli and Pip Devonshire

Whiriwhiria presented the latest weaving from a group of Māori weavers connected by whakapapa, the Kāpiti Coast township of Ōtaki and as exhibiting artists at the Toi Matarau Gallery in the Māoriland Film Hub.

This group formally came together as hosts of the 2021 Weavers National Hui at Te Wānanga o Raukawa. When that hui was postponed due to COVID, they channelled their energy into creating new work to be shown at the Toi Māori Gallery.

The title, *Whiriwhiria*, given by their kuia Sonia Snowden, set the kaupapa of the exhibition as a binding together of diverse expertise and distinctive individual styles inspired by the rich foundation of ancestral Māori weaving.

Working through the summer, each weaver sought to achieve a high standard of work as a show of respect to the other weavers in their roopu.

Indeed, the exhibition—so elegantly presented by Pip Devonshire and Charlene Fraser—was sensational and widely-acclaimed.

### Manawa Ora (2022)

by Elaine Bevan & Manu Bernard Carkeek  
Harakeke, muka, traditional dyes  
Presented in Whiriwhiria 2022

*"It is not often that we get to experience masterful weaving in a city gallery. We might admire aged taonga in museums, raise eyebrows at someone's ornate kete at a hui or have seen graduates adorned with intricate kākāhu or korowai. But to see them in a collective setting is a rare privilege, and this is afforded to us by Whiriwhiria ... The technical skill required to produce works of this calibre cannot be underestimated ... Each of the elements presented in this incredible exhibition are reflective of the very Māori, creative, intergenerational modes of knowledge transmission that occur within our worldview."*

– Rangimarie Sophie Jolley, Whiriwhiria Exhibition Review, 'Te Hikoi Toi: Behold our Storytelling Masters', *Dominion Post*, 14 May 2022

*"I stood there looking at the intricate works, each with their own journey woven into their respective expressions, and slowly the tears started to fall. It's been a long time since I've been moved in this way by contemporary masters of this media."*

– Rangi Kipa, Whiriwhiria comment, Toi Māori Aotearoa Facebook post, 26 May 2022

*"Stunning beautiful weaving. The aroha shines through the mahi."*

– Visitor comment, Whiriwhiria exhibition, 16 June 2022



**Te Tumu Whakarae assisting with the karakia for the Aotearoa Art Fair starting at Fred Graham's Kaitiaki (right)**  
16 November 2022



**Aotearoa Art Fair Opening Night (l-r): Pirihira Cowie, Ranui Ngarimu, Tracey Morgan and Lady Rose Gould-Lardelli**  
Photographer: Abigail Dell'Avo, Ensemble Magazine  
16 November 2022



**Te Takapū o Rotowhio (NZMACI) at the Toi Māori Gallery, (l-r): Kihoro Hohepa, Reuben Oneroa, Stacy Gordine, Tipene Oneroa, Te Okiwa Morgan**  
17 November 2022



**Sir Professor Derek Lardelli undertaking the moko kauae for Anahera Higgins**  
20 November 2022

## Aotearoa Art Fair

### The Cloud, Auckland waterfront

15-20 November 2023

Todd Couper, Lewis Gardiner, Stacy Gordine, Kōhai Grace, Lyonel Grant, Amorangi Hikuroa, Sir Professor Derek Lardelli, Ranui Ngarimu, Baye Riddell, Sonia Snowden, Ngaire Tuhua, Shannon Wafer

The Toi Māori Gallery presented 31 art works by 12 Māori artists at the 2022 Aotearoa Art Fair.

Initially scheduled for March, though postponed to November 2022 due to regional lockdown, our exhibition included 20 art works made specifically for this event, and we refreshed the display daily.

The involvement of Toi Māori Aotearoa had a substantial impact on the 2022 Aotearoa Art Fair. Toi Māori Te Pukonohi, Sir Professor Derek Lardelli and Te Tumu Whakarae represented all Māori artists participating at the Art Fair at the first pōwhiri to be conducted at the Fair by Ngāti Whatua, supported by fellow Trustees, Ranui Ngarimu, Tracey Morgan and Lady Rose Gould-Lardelli, and exhibiting artists, Lewis Gardiner and Stacy Gordine.

Toi Māori hosted the NZQA Māori art accreditation team on Opening Night and presented a talk with other participating Māori artists, Melanie Tangaere Baldwin of Hoēa! and Roman Mitch of Mokopōpaki at an ANZ Private Client event.

A private gathering to mark the involvement of Toi Māori Aotearoa was hosted by Sir Chris and Lady Dale Mace at their residence on Thursday 16 November, which enabled direct engagement with patrons, international visitors and other Art Fair gallerists.

A delegation of past and present students of Te Takapū o Rotowhio, the National Stone and Bone Carving School in Rotorua, also travelled to the event to support their kaiako, Lewis Gardiner and Stacy Gordine.

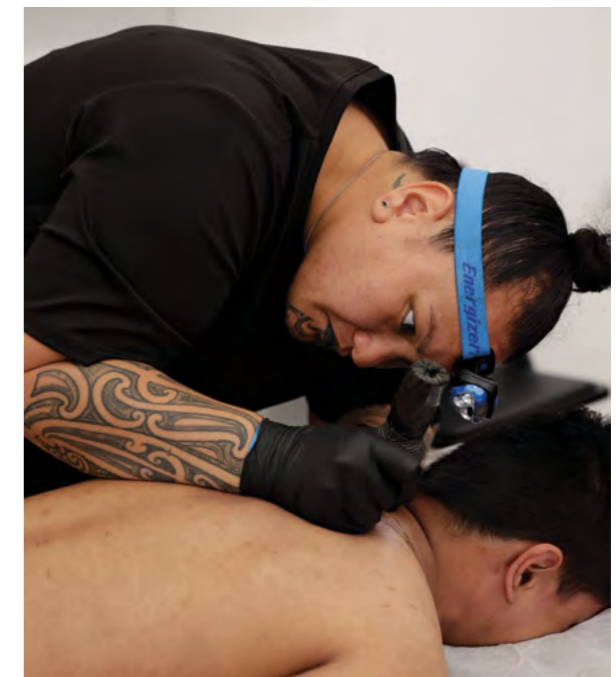
A highlight was the tā moko demonstration by Sir Professor Derek Lardelli and Ngaire Tuhua of Te Uhi ā Mataora over the weekend culminated in Anahera Higgins receiving her moko kauae on Sunday afternoon, which made a massive impression on interested viewers, many of whom remained transfixed on the spot for the duration of this process.

*"Now that's how you make art!"*

– Visitor comment, Sunday 20 November 2022

*"This is the first year Toi Māori Aotearoa have had a stall at the fair, and what a success to see such a strong toi Māori contingent."*

– Mya Morrison-Middleton, 'Highlights and Reflections on the Aotearoa Art Fair', The Pantograph Punch, published 9 December 2022, [www.pantograph-punch.com/posts/the-art-fair-highlights-reflections](http://www.pantograph-punch.com/posts/the-art-fair-highlights-reflections).



**Ngaire Tuhua, Te Uhi ā Mataora**  
Image courtesy of Aotearoa Art Fair  
19 November 2022



# OUR COMMITTEES

## Statements from Committee Chairs

### He Awahi Tikanga

He Awahi Tikanga is a team of expert knowledge holders whose mission is to ensure that the integrity of te reo Māori me ōna tikanga is upheld within the structures and art forms that make up Toi Māori Aotearoa. The Committee is considered to be a *focus group* for tikanga and central to the well-being of Toi Māori Aotearoa within the Māori creative arts sector.

He Awahi Tikanga members are resource people who support workshops and wānanga and also work as an advisory team to Toi Māori Aotearoa art form teams and activities. He Awahi Tikanga encourages artists to focus their creativity and draw strength from the marae and their tupuna.

The practice of karanga, whaikōrero, waiata and karakia are critical to the integrity of tikanga Toi Māori however, all types of creative activity in and around the marae are worthy of development and promotion.

Tikanga is critical to the integrity of Toi Māori Art Forms in that it is a mechanism that has the ability to support, nurture and guide the creative potential within.

**Chair:** Joe Harawira

### Kaupapa Waka

Kaupapa waka is the relearning of the knowledge, skills, rituals and traditions of our ancestors relating to waka, the sharing and distribution of this knowledge to our people, particularly youth, to assist in the restoration and maintenance of their mana, that will enable them to practice our tikanga, and reo in the wider community and on the world stage.

This kaupapa has evolved from before our ancestors departed from Hawaiki to the present day. In modern times the commissioning of waka taua by Te Puea Herangi was the catalyst that developed modern-day kaupapa waka. This was reinforced in 1990 when waka became a symbol of mana and pride for the many iwi that took part in the Waitangi Day commemorations. Today there are many types of waka being paddled and sailed in all areas of Aotearoa and to many places in the world.

Ngā Waka Federation continues to foster and promote kaupapa waka with regular pageants and events promoting waka within Aotearoa and overseas. We are actively encouraging and developing young leaders of waka who are able to transition to leadership roles in Te Ao Māori and the wider community.



'The Convert' film set

Image: Guy Pearce, @TheGuyPearce, Twitter, 27 September 2022



Haumanu Collective at Te Papa Tongarewa

29 June 2022

Our activities for the last year included approximately 80 kaihoe and three waka involved in the film 'The Convert' produced by Lee Tamahori in July at several locations around Tāmaki Makaurau. In August, a fleeting visit to Leiden was made, connecting up with some of our Dutch kaihoe, by myself, Rutene Gabel, Anaru Irwin and his whānau, while en route to the World Waka Ama championships in London. In November, waka leaders of the Federation attended the opening and blessing of the exhibition *Manu Rere Moana*, He Kaupapa Waka, Kawe Mate held at Te Papa Whare Taonga. A number of waka leaders appeared on panels that interacted with the general public (see Activity Highlights).

In all, the last year has seen a welcome return to our activities and exhibitions, which has been enjoyed and appreciated by all.

**Chair:** Robert Gabel

**Committee:** Joe Conrad, Tai Mamaku, Rutene Gabel

### Pūatatangi

Te Ara Pūoro was developed by Pūatatangi in the mid-1990s and guides our kaupapa. Through Te Ara Pūoro – Māori Music Endeavour, and the Māori Music Strategy that includes the Four Worlds of Māori Music.

We continue to support and promote Māori artists, musicians, composers, producers and performers whilst working on our own arts practice within the Māori Music industry.

As a Committee and as freelance music practitioners, composers, producers, managers and artists, building valuable working relationships is paramount. Whether with our peers or multiple organisations this contributes towards a thriving Aotearoa and Māori music industry.

Our legacy event Pao Pao Pao is a highlight outcome for Pūatatangi, and we are planning to host the next one in Wellington at Pipitea Marae in due course.

Due to the impacts of COVID, Pūatatangi has an in-person hui to schedule and consolidate our pathway forward with the current Committee and our programmes.

**Co-Chairs:** Toni Huata and Mere Taylor-Tuiloma  
**Committee:** Horomona Horo and Noel Woods



#### **Huritau exhibition**

Curated by Vanessa Buerger  
Whanganui Community Arts Centre  
9-26 July 2022



#### **Te Ātinga ki Rotorua hui-a-rohe**

Rotorua Arts Village, Rotorua  
9 October 2022

### **Te Ātinga**

Te Ātinga celebrates the achievements of our Māori arts professionals from across Aotearoa. Our artists lead conversations and play prominent roles in health, education, strategy, arts and culture entities, iwi and community. Contemporary Māori Arts are thriving in Aotearoa and beyond and forging forward into the future.

2022 was a busy year for Te Ātinga, with the addition of new Committee members and organising and delivering a series of workshops, kōrero and exhibitions in various rohe across the country.

We would like to acknowledge outgoing Chair Nigel Borell (2008-2021) for his immense contribution to the Committee through his writing, curating and service to contemporary Māori artists. A huge acknowledgement is also due to our pou, Gabrielle Belz for her long-standing service on Te Ātinga (2000-2022), during which she has seen many changes and stood strong for Māori arts. Her contribution will continue to be felt for generations to come. Piri Cowie also left the Committee to dedicate more time to her arts practice and whānau. Piri always brought a lightness and a 'can do' focus that was very valuable to the Committee during her time with us. We wish her all the best in her exciting new endeavour.

Te Ātinga also celebrated the presentation of the 2022 Ngā Tohu Hautūtanga Auaha Toi – Making a Difference Te Waka Toi Award to Gabrielle Belz and Ross Hemara for their life-long commitment and dedication to contemporary Māori arts. We are forever grateful for their contribution to Māori visual arts practices and their ongoing guidance and support for Te Ātinga activities over the years.

A number of changes have occurred within Te Ātinga, with Margaret Aull appointed as Chair and Regan Balzer as Deputy Chair of the Committee. We also welcomed Rongomaiaia Te Whaiti, Deputy Kaihautu Toi Māori—Deputy Director of Māori Art at Toi Rauwharangi, College of Creative Arts, Massey University—who brings her expertise and knowledge in the arts as well as her connections throughout the lower North Island and Te Wai Pounamu.

**Chairs:** Margaret Aull

**Deputy Chair:** Regan Balzer

**Members:** Chris Bryant-Toi, Tāwera Tahuri, Dorothy Waetford, Vanessa Buerger, Bonita Bigham, Bethany Edmunds, Aimee Ratana, Randal Leach, Reweti Arapere, Charlotte Graham, Rongomaiaia Te Whaiti

[www.teatinga.com](http://www.teatinga.com)



**Te Puna Waiora: The Distinguished Weavers of Te Kāhui Whiritoi** published by Christchurch Art Gallery Te Puna o Waiwhetū was awarded two categories in the Art Association of Australia and New Zealand Art Publishing Awards 2022 – Best Art Writing by a Māori or Pasifika writer and Best Medium Exhibition Catalogue. It also won Best Exhibition Catalogue (Major) at the 2022 Museums Australia Publication Design Awards

### **Te Roopu Raranga Whatu o Aotearoa**

Te Rōpū Raranga Whatu o Aotearoa comprises financial members who elect a Committee to guide, plan and provide for the needs of its members under the kākahu of Hine-te-iwaiwa and Te Whare Pora. This is done by providing opportunities to wānanga, kōrero, learn, exhibit and create works that are traditional and contemporary in their nature or fibre, and through the distribution of its magazine. The Roopu works closely with Toi Māori Aotearoa to ensure that the art forms of raranga and whatu are presented on both the national and international stage and seeks advice from its Kāhui Whiritoi, who provide guidance, wisdom and keep the Committee grounded.

After the success of the exhibition and publication, *Te Puna Waiora: The Distinguished Weavers of Te Kāhui Whiritoi*, the Committee has grappled with the threats posed by the community transmission of COVID to long-term plans. Meeting regularly throughout the year, the Committee has balanced the need to maintain our two-year cycle of events with the safety of kaumātua and vulnerable communities and retain focus on planning for the arrival of Te Rā and Weavers National Hui in 2023.

**Chair:** Paula Rigby

**Committee:** Te Hemo Ata Henare (Deputy Chair), Hinekura Smith, Edna Pahewa, Ruth Port, Julz Noanoa



#### **Te Rūnanga Whakairo National Hui planning meeting**

(l-r) Eugene Kara, Stacy Gordine, Kereti Rautangata [by video link], Fayne Robinson, Lewis Gardiner, Rangi Kipa, Tamahou Temara  
Toi Māori office, Wellington, 9 August 2022

### **Te Rūnanga Whakairo**

Te Rūnanga Whakairo comprises a national network of tohunga whakairo. Championing individuals active across art forms who bring Māori artists in their regions together, the operation of Rūnanga Whakairo accounts for the multi-dimensional nature of toi whakairo, the breadth of knowledge required of tohunga whakairo, and the importance of whakairo within Māori communities.

Te Rūnanga is focused on maintaining and developing the concept of whakairo as synonymous with advanced and informed design thinking, not specific to reductive wood carving or specific gender, but the demonstration of an informed ancestral aesthetic evident across different art form traditions and media—old and new.

I would like to acknowledge the contributions of the Whakairo National Hui working group, who have remained dedicated to this long-awaited gathering through the disruptions of COVID. With the support of the National Māori Arts and Crafts Institute, we are looking forward to the Whakairo National Hui at Te Puia over King's Birthday weekend 2023.

**Chair:** Rangi Kipa

**Whakairo National Hui Working Group:**

Kereti Rautangata, Lyonel Grant, Bernard Makoare, Fayne Robinson, Stacy Gordine, Eugene Kara

### Te Uhi ā Mataora

Te Uhi ā Mataora comprises mainly senior tā moko artists from across Aotearoa. Te Uhi ā Mataora seeks to preserve, develop and enhance tā moko as a living art form whilst upholding past traditions. Te Uhi has a focus on researching and retaining ancient rituals, karakia and whakapapa moko while continuing to strategise and provide leadership and support in all areas pertaining to tā moko. A close association with organisations such as Te Papa allows for wānanga/kōrero where tribal design elements are researched in the context of ancient mātauranga, and contemporary health and safety practices, along with advances in tools and equipment, are also a focus of discussion.

After a two-year break, primarily due to concerns regarding the airborne transmissibility of COVID, the annual Te Uhi wānanga was held at Toihoukura in Gisborne in September 2022 (see Activity Highlights). The wānanga was well attended by tāmoko artists, students, Māori health sector personnel, kahui tara members and the general public. Each day began with karakia followed by a wānanga hui. All present were encouraged to wānanga their knowledge along with their views on a number of kaupapa, especially topics of current interest. A formal Te Uhi ā Mataora hui was also held during this wānanga, with some Committee members joining via Zoom. All agreed there is a continued relevance for Te Uhi to continue as more and more ringatā take up the artform.

The Committee members have strong and varied networks across Aotearoa and mentor and guide many ringatā and recipients alike. This ranges from formal mokopapa (such as those held regularly in Te Whānau-ā-Apanui for the last 10 years), to wānanga (such as those held in Te Arawa), public demonstrations at festivals and events, and hui with individuals and whānau groups.

When COVID-related border restrictions relaxed, four Te Uhi members headed to Canada in June 2022 to attend an artists' symposium hosted

by Emily Carr University, Vancouver. Toi Māori connections with artists from Canada, the United States, Hawaii, Aotearoa and Japan were rekindled and strengthened. Much gratitude must go to Brenda Crabtree and her team of organisers. The delegation from Aotearoa covered several art forms (moko, weaving, carving, multi-media and painting) selected by personal invitation from Emily Carr staff. Toi Māori pakeke and rangatahi worked side by side, and much intergenerational transfer of knowledge happened within those two fabulous weeks.

Te Uhi ā Mataora strives to normalise moko, educate mainstream audiences and engage with new audiences. A major highlight was the demonstration of moko at the 2022 Aotearoa Art Fair (see Activity Highlights), which provided the first opportunity for many attendees to experience the process of tā moko. Feedback was extremely positive, with a further invitation issued to attend again—a sign that non-Māori understanding and acceptance of tā moko is growing.

Te Uhi ā Mataora members are active across a range of media to promote knowledge about tā moko. In 2022 two standout examples include the launch of Joni Brooking's book *Mokolife* which focuses on her journey and Te Kanoi o te Uhi—the female energies of the modern chisel—and the filming for Henare Brooking's documentary series on moko to be aired in 2023.

Despite there still being challenges for some wearers of moko the art form continues to grow and again take its rightful place in Aotearoa society.

**Chair:** Sir Professor Derek Lardelli

**Committee:** Henare Brooking, Joni Brooking, Rangi Kipa, Daniel McGrath, Riki Manuel, Kingi Pitiroi, Ngaire Tuhua, Maia Gibbs, Lady Rose Gould-Lardelli

Supported by Tommy Clark, Anikaaroa Harawira, Makarini Solomon, Ayson Lewis, Turumakina Duley, Hohua Mohi, Erena Koopu



**Verb Festival 'Te Paepae Rangatahi', Meriana Johnsen, Nadia Hineorangi Solomon, Mariwakiterangi Paekau and Trinity Thompson-Browne**

5 November 2022, Meow, Wellington

### Te Hā o Ngā Pou Kaituhi Māori

*E hika mā, He aha rā ngā tohu o te wā? He pukenga wai ka puta he rākau. Kei te takutai o Te Ikaroa Rāwhiti tēnei mea te rākau e putuputu ana.*

*Tēnā tātau i a rātau mā kua hinga i te tau kua hipa, ko Moana Jackson rātau ko June Jackson, ko Titewhai Harawira ērā. Haere rā e pā, e kui mā ki te wahangūtanga o te pō.*

*He pukenga tāngata, ka puta he kōrero. Arā atu te pukenga Māori kua tohua i te tau kua hipa, ko Haare Williams kua tohua ki te KNZM, ko Trevor Maxwell rātau ko Kaa, ko Tāwhirimātea Williams kua tohua ki te CNZM. Ko Te Haumihia Mason rātau ko Pania Papa kua tohua ki te ONZM. I tērā rua tekau tau, ko wai te tangata ka matakite i te aranga mai o Matariki hei hararei tūmatanui mō Aotearoa? Tēnā hoki tātau i a Rangi Mataamua (ONZM).*

*Otirā, tēnā tātau i te pūrongo ā-Tau o Toi Māori Aotearoa, i ngā mahi tautoko i ngā toi Māori puta noa i te ao.*

Like all those working in the arts, Te Hā o Ngā Pou Kaituhi Māori has continued to experience significant impacts in 2022 due to the COVID pandemic in its many iterations. The heightened importance of protecting iwi Māori by adherence to the most comprehensive public gathering restrictions and social distancing measures resulted in the cancellation of our long-planned and postponed National Hui and reunion.

Our strategic relationships have continued to develop. Part of the motivation for seeking to engage more in the Te Tiriti partnership space is due to capacity constraints and the aforementioned challenges around COVID. Strategic partnerships, for example, with ReadNZ, have allowed us to have influence and impact in creative ways. As a result of

Te Hā's permanent representative position on the Board of ReadNZ, we successfully advocated for the entire Board and staff to invest in ongoing Te Tiriti training. This directly influenced the development of ReadNZ's strategic plan towards equity and increase in investment to intentionally grow the number of Māori writers in their Writers in Schools programme. This is not only beneficial to writers by improving the sustainability of writing as a career, but also provides schools and Māori students with access to a wider diversity of Māori writers. Simultaneously, ReadNZ continues to actively grow the number of Māori writers profiled in their database of New Zealand writers, including kaituhi reo Māori and writers publishing outside the mainstream publishing industry.

Another strategic partnership that has allowed Te Hā to provide opportunities for the community has been via the ongoing relationship with Verb Wellington (see Activity Highlights).

Te Hā o Ngā Pou will continue to develop and strengthen our strategic relationships with festivals, working to establish a Te Tiriti-led model that ensures equity, embeds the role of kaituhi Māori in co-steering of the festival, and creates space for emerging indigenous voices.

### Nā Te Hā o Ngā Pou Kaituhi Māori

**Co-Chairs:** Nadine Hura, Anahera Gildea

**Members:** Wena Tait, Paora Tibble, Ruth Smith, Kirsty Dunn, Emma Espiner, Cassie Hart, Trent Hohaia, James George, Bridget Underhill, Jacqueline Carter, Ripeka Takotowai Goddard

**Rangatahi member:** Sheldon Rua

[kaituhimaori.org.nz](http://kaituhimaori.org.nz)

## MĀORI ARTS INTERNSHIP PROGRAMME (MAI)

Developing future leaders within Māori arts infrastructure

Toi Māori Aotearoa delivers the Māori Arts Internship (MAI) Programme contract on behalf of Creative New Zealand.

MAI establishes pathways for those wishing to develop their career in arts administration and support the Māori arts infrastructure. The programme matches interns with host organisations for 20 weeks to foster their development as arts administrators through direct mentorship and professional experience. Since 2013, the MAI Programme has supported the career development of 38 Māori arts professionals.

The quality of Host Mentors' support is crucial to the interns' experience of the MAI Programme and we would like to acknowledge the 2022 Host Organisations for the high level of management and care given to the 2022 MAI Interns.

Similarly, we acknowledge the outstanding support provided by the MAI Programme Mentor, Tanea Heke, who continues to provide brilliant insight and generous manaakitanga to our interns throughout their internships.

We congratulate our 2022 interns and wish them all the best for their future endeavours within the arts sector – ngā mihi nui!

### Whāriki Tohi (detail)

by Mātene Te Putu Climie

Harakeke, muka, gemstones, houhere, pearl, paua, natural dyes

Presented in Whiriwhiria 2022

### MAI Programme Mentors' Reflection

*"I continue to see the real benefits in the MAI Programme as a connector of our people to a sustainable career in the arts and our interns are benefitting by finding careers in the sector."*

*It continues to be a privilege and a pleasurable challenge being the mentor of the programme and I am grateful to both Creative New Zealand and my colleagues at Toi Māori for the opportunity to work in this space with our new rangatira of the Māori arts sector."*



**Tanea Heke**  
MAI Programme Mentor 2022





**Tamahou Temara, Alesha Ahdar, Arawhita Christie,  
Mayet Regala Rigg, Kurupae Rikihana**  
Toi Māori office, Wellington, 17 January 2022

## 2022 MAI INTERNS

### Alesha Ahdar

Ngāti Maniapoto, Te Arawa, Tapuika, Samoa

**Host Organisation:** BATS Theatre, Te Whanganui-a-Tara

**Host Mentors:** Jonathon Hendry (Chief Executive), Stevie Greeks (Marketing & Communications Manager)

Alesha is a multi-disciplinary storyteller who brings takatāpui stories to our screens and stages.

At BATS, Alesha provided high-quality support to the implementation and delivery of seasonal programming.

After developing hard skills in management, strategic development, and intercultural policy implementation, Alesha officially joined the BATS Theatre team as Programmer in June 2022.

“Our thanks to you all at Toi Māori for enabling us to work with Alesha ... BATS is delighted to have employed Alesha following the internship as our new Programmer.” – Jonathon Hendry

### Kurupae Rikihana

Ngāti Raukawa Te Au ki te Tonga, Ngāti Toa Rangatira, Te Ātiawa

**Host Organisation:** Māoriland Charitable Trust, Ōtaki

**Host Mentors:** Libby Hakaraia (Te Tumu Whakarae), Madeleine de Young (Kaiwhakahau Hōtaka)

With over 10 years’ experience in the film and television industry both nationally and abroad, Kurupae joined the MAI Programme with in-depth experience to support the 2022 Māoriland Film Festival at Māoriland Charitable Trust.

Opportunities for Kurupae to develop her facilitation skills throughout the internship were abundant – including the chance to travel to Fiji to support the Through Our Lens programme: a cultural exchange programme for young Indigenous storytellers to connect through film.

“Thank you for the many opportunities I was able to experience during my time with Māoriland. I’ve enjoyed being a part of a team and have worked alongside amazing, talented, hardworking and lovely people. Nōku te whiwhi.” – Kurupae Rikihana



**Ngāhina Belton-Bodsworth, Juanita Hepi, Arawhita Christie,  
Taniora Tamati-Rakete, Ranui Ngarimu, Māia Abraham,**  
Christchurch Art Gallery Te Puna Waiwhetū, Friday 19 August 2022

### Taniora Raniera Erihana Tamati-Rakete

Kai Tahu, Te Ātiawa, Ngā Puhi, Ngāti Pākehā

**Host Organisation:** The Physics Room, Ōtautahi

**Host Mentor:** Abby Cunnane (Director)

Taniora’s keen interest in reflective expression and creatively cultivating space aligned with the opportunity to curate his first exhibition as the 2022 MAI intern at The Physics Room.

Guided and supported by Abby Cunnane, Taniora explored the concept of te hā, the sacred breath, in the work of contemporary indigenous artists.

The Physics Room contracted Taniora to deliver *Te Hā* (27 January – 3 March 2023) featuring the work of five artists and a programme of performances and lectures, which was well-received by participating artists and visitors. The success of *Te Hā* demonstrates the potential of rangatahi when provided exceptional mentorship in a supportive environment.

“Taniora is a joy to have on the team. I particularly appreciate the level of energy that you bring to hosting, Taniora, and to research; these are key parts of the role. Thanks heaps for everything you bring to The Physics Room.” – Abby Cunnane

### Ngahina Belton-Bodsworth

Te Ātiawa, Rangitane, Muaūpoko

**Host Organisation:** Te Matatiki Toi Ora | The Arts Centre, Ōtautahi

**Host Mentor:** Chris Archer (Creative Director)

Painter and 2021 Kiingi Tūheitia Portraiture Award finalist Ngahina joined the MAI Programme to develop general arts administration skills.

At Te Matatiki Toi Ora, Ngahina worked on the programme and activities for a 2023 Matariki exhibition, which she has been contracted to deliver in July 2023.

“I gained a lot of skills and learning during my time here at The Arts Centre ... I have had access to experiences and opportunities that I wouldn’t have otherwise had. This programme has given me so much and I am very grateful.” – Ngahina Belton-Bodsworth

“We have LOVED having Ngahina with us and are very sad to see her go... but stoked that she has accepted a contract with us to deliver the Matariki 2023 Exhibition at Te Matatiki Toi Ora in July next year.” – Chris Archer



**Harvesting kina for the meeting of  
Te Roopu Raranga Whatu o Aotearoa**

(l-r): Te Kirikātōkia Rangihau, Arawhita Christie,  
Tamahou Temara, Riarna Vulu and Lily Kara Liu  
25 January 2023

## TOIHONOA PARTNERSHIP: TE HERENGA WAKA VICTORIA UNIVERSITY OF WELLINGTON

For the second year, Toi Māori Aotearoa partnered with Te Herenga Waka to host two taura Māori for ten-week internships beginning in November 2022.

### Riarna Vulu

*Te Whānau ā Apanui, Tokelau (Nukunonu,) Samoa (Vailoa Faleata, Falevao)*

“Being at Toi Māori, I was surrounded by Māori language, immersed in Māori culture and exposed to te ao Māori. Going into the public sector, I can take from Toi Māori the impact that they have had on people. The opportunities that they offer through their programmes and Committees for people to express themselves through arts is something that I definitely want to uphold.

Toi Māori’s support made my transition from uni to work life enjoyable, fun and it was well worth the time.”

On completion of the Taihonoa Internship, Riarna enters the Govtechtalent Programme administered by the Department of Internal Affairs, which sees her rotate through various government departments beginning at ACC.

### Lily Kara-Liu

*Waikato-Tainui, Ngāpuhi*

Studying toward a Bachelor of Communication with a double-major in Media Studies and Film

“I got to learn about so many awesome artists, events and exhibitions that have been pivotal in the revival of Māori arts and culture, and what I liked the most is that I learned about it in a much more personal way than I would at uni, because I was reading about it from first-hand perspectives rather than in a more clinical and scholarly-evaluation kind of way.

I loved the friendly office environment which made for a perfect first internship, but mostly I enjoyed just getting to meet lots of artists and people in the arts industry.”

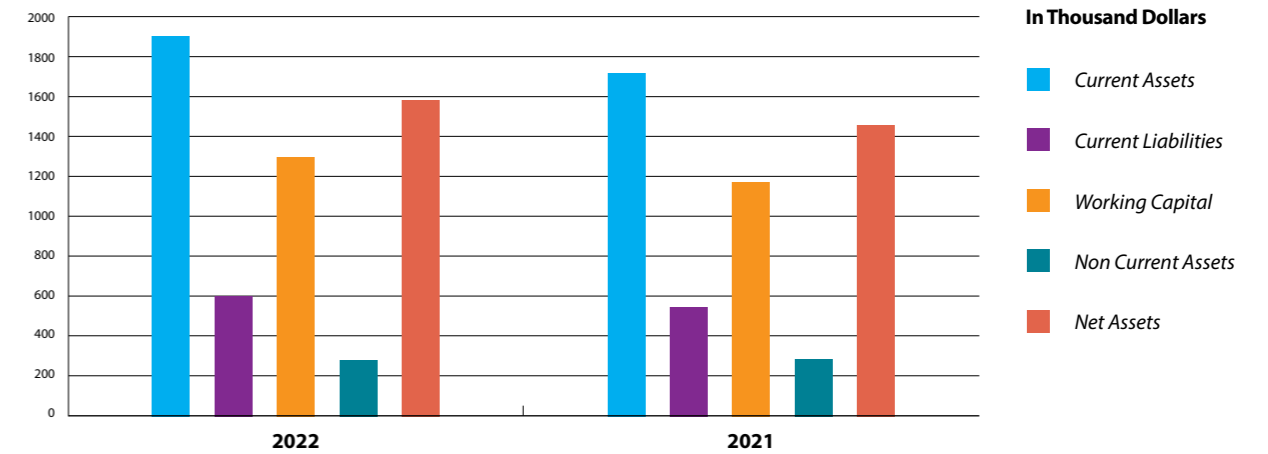
# FINANCIAL HIGHLIGHTS 2022

Please refer to the Performance Report for more details.

## Statement of Financial Performance For the year ended 31 December 2022

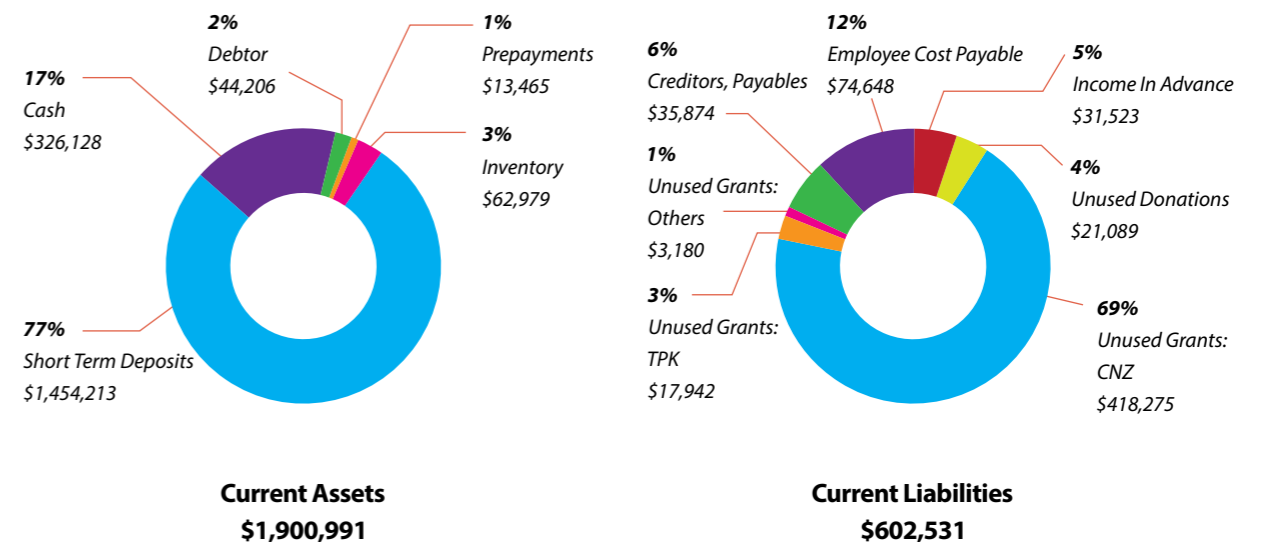
REVENUE	2022			2021		
	TMA	TML & TMML	TMA GROUP	TMA	TML & TMML	TMA GROUP
Donations	1,576	1	1,577	4,642	3	4,645
Fees, subscriptions and other revenue from members	10,757	-	10,757	10,078	0	10,078
Revenue from providing goods & services	924,248	20,849	945,097	943,468	15,161	958,629
Interest	24,211	6,177	30,388	7,543	2,357	9,900
<b>TOTAL REVENUE</b>	<b>960,792</b>	<b>27,027</b>	<b>987,819</b>	<b>965,731</b>	<b>17,521</b>	<b>983,252</b>
<b>EXPENSES</b>						
Volunteer & employee related costs	464,904	-	464,904	463,685	-	463,685
Costs relating to goods or services	377,405	13,833	391,238	486,297	11,006	497,303
Other Expenses	6,020	-	6,020	6,291	-	6,291
<b>TOTAL EXPENSES</b>	<b>848,329</b>	<b>13,833</b>	<b>862,162</b>	<b>956,273</b>	<b>11,006</b>	<b>967,279</b>
<b>NET SURPLUS FOR THE YEAR</b>	<b>112,463</b>	<b>13,194</b>	<b>125,657</b>	<b>9,458</b>	<b>6,515</b>	<b>15,973</b>

## Toi Māori Aotearoa Group Statement of Financial Position As at 31 December 2022



	2022			2021		
	TMA	TML & TMML	TMA GROUP	TMA	TML & TMML	TMA GROUP
Current Assets	1,488,782	412,209	1,900,991	1,313,652	403,660	1,717,312
Current Liabilities	579,077	23,454	602,531	519,203	28,099	547,302
<b>WORKING CAPITAL</b>	<b>909,705</b>	<b>388,755</b>	<b>1,298,460</b>	<b>794,449</b>	<b>375,561</b>	<b>1,170,010</b>
Non Current Assets	147,862	136,200	284,062	150,655	136,200	286,855
<b>NET ASSETS</b>	<b>1,057,567</b>	<b>524,955</b>	<b>1,582,522</b>	<b>945,104</b>	<b>511,761</b>	<b>1,456,865</b>
<b>EQUITY</b>	<b>1,057,567</b>	<b>524,955</b>	<b>1,582,522</b>	<b>945,104</b>	<b>511,761</b>	<b>1,456,865</b>

## Toi Māori Aotearoa Group Financial Position



**Working Capital = \$1,298,460 & Working Capital Ratio of 3.16**

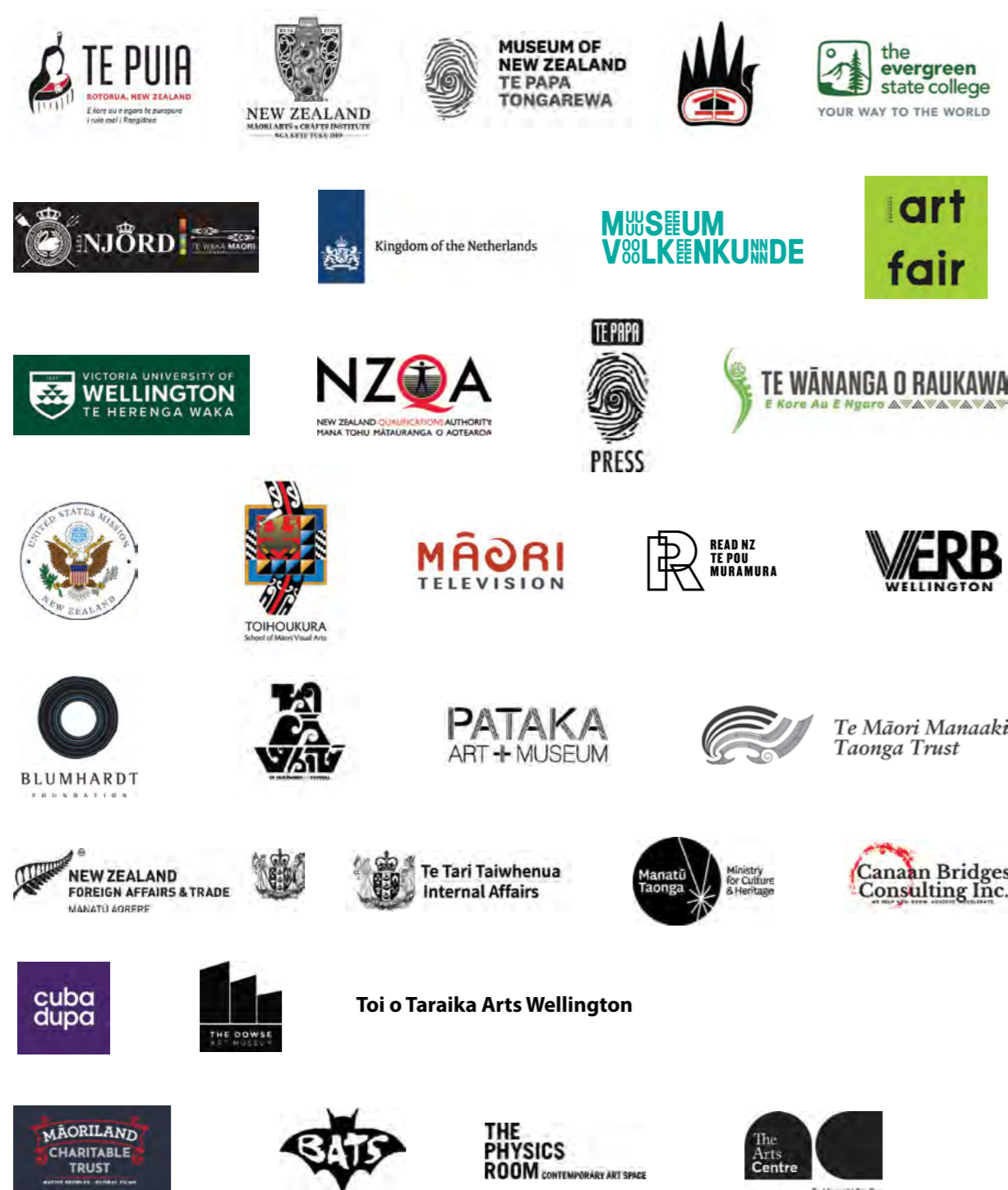
**Add: Non Current Assets \$284,062**

**Net Assets \$1,582,522**

**Equity \$1,582,522**

# ACKNOWLEDGEMENTS

## Principal Funder



## TRIBES

Te Ātiawa	Ngāti Toa	Tairāwhiti iwi	Te Taitokerau iwi
Mataatua Iwi	Grand Ronde Tribes, Portland Oregon	Suquamish Tribe, Seattle	Siletz Tribe, Portland, Oregon

## MARAE

Maungatautari marae, Waikato	Raglan Kōkiri Arts Centre, Whāingaroa	Rehua marae, Ōtautahi
Kohunui marae, Pirinoa, Wairarapa	Ruaihona marae, Te Teko	Otangaroa marae, Whangaroa

*Tēnei te mihi nui whakarahara ki a koutou i whakawātea mai o koutou marae hai nōhanga mō ngā ringarehe ki te wānanga, ki te whakairo i ngā ahurea toi māori.*

## Toi Māori Staff 2022

<b>Te Tumu Whakarae   General Manager:</b> Tamahou Temara	<b>Kairuruku Hōtaka   Programme Coordinator:</b> Arawhita Christie
<b>Business Services and Development Manager:</b> Mayet Regala Rigg	<b>Kaiwhakahaere Hōtaka   Programme Administrator:</b> Te Kirikātōkia Rangihau
<b>Tātai Taura   Principal Advisor:</b> Dr Anna-Marie White	<b>Visual Communicator/Toi Māori Gallery Co-ordinator:</b> Edgardo Tabios
<b>Business Services Accounts Administrator:</b> Ren Tabios	

**Reo Māori Advisor:** Tamahou Temara

**Designed by:** Edgardo Tabios



**Front Cover Image:**

**Anahera Higgins receiving her moko kauae from**

**Sir Professor Derek Lardelli at the 2022 Aotearoa Art Fair**

Sunday 20 November 2022

Photographers: Clare Higgins and Ngaire Fuata



**Toi Māori Aotearoa**  
Māori Arts New Zealand



ARTS COUNCIL OF NEW ZEALAND TOI AOTEAROA

---

**TOI MĀORI AOTEAROA – MĀORI ARTS NEW ZEALAND**

**Address:** Level 4, Change House,  
150 Featherston Street,  
Wellington Central,  
6011

**Ph:** +64 4 801 7914

**Email:** [admin@maoriart.org.nz](mailto:admin@maoriart.org.nz)

**Web:** [maoriart.org.nz](http://maoriart.org.nz)

**FB:** /ToiMāoriAotearoa

**IG:** [toi\\_maori\\_aotearoa](https://www.instagram.com/toi_maori_aotearoa)

**Post:** PO Box 9570  
Marion Square,  
Wellington 6141



*Toi Maori Aotearoa*  
maori arts new zealand

# **TOI MĀORI AOTEAROA GROUP**

PERFORMANCE REPORT  
31 DECEMBER 2022

**TOI MĀORI AOTEAROA GROUP**  
**PERFORMANCE REPORT**  
**FOR THE YEAR ENDED 31 DECEMBER 2022**

**TABLE OF CONTENTS**

	<i>PAGE</i>
<b><u>Non-Financial Information</u></b>	
Entity Information	2
Statement of Service Performance	5
<b><u>Financial Information</u></b>	
Statement of Financial Performance	10
Statement of Financial Position	11
Statement of Cash Flows	12
Statement of Accounting Policies	13
Notes to the Performance Report	16
Audit Report	24

**Toi Māori Aotearoa Group**  
**Entity Information**  
**For the Year Ended 31 December 2022**

Legal Name of Entities	Toi Māori Aotearoa Group		
	Toi Māori Aotearoa – Māori Arts New Zealand Charitable Trust (TMA)	Toi Māori Limited Group	
		Toi Māori Limited (TML)	Toi Māori Market Limited (TMML)
Type of Entity	Charitable Trust Registered Charity Parent	Limited Company Registered Charity Subsidiary	Limited Company Registered Charity
Charity Registration Number	CC31150	CC32033	CC33879
Group Charity Registration	CC54639		
Incorporation Number	814699	1635479	1806986
IRD Number	64-990-039	91-222-426	93-813-375
Date of Incorporation	20 February 1997	25 May 2005	18 May 2006
Purpose and Nature of Business	TMA Trust is an umbrella organisation that supports the development of contemporary Māori arts through programmes and projects that reach and expand audiences seeking vibrant and authentic contemporary Māori arts.	To promote, develop and preserve the uniqueness, quality and cultural expression of contemporary Māori art and enter into commercial arrangements to further its advancement.	To promote, develop and establish the Māori market concept and facilitate the development of Māori art, Māori artists and grow the market for Māori art.
Entity Structure	TMA Trust currently has seven Trustees that constitute the governance board.  The Trust Deed states that there shall be no more than seven (7) and no fewer than five (5) Kaitiaki (Trustees).  Each National Māori Art Form Committee nominates the Kaitiaki (Trustee). The Kaitiaki shall be appointed to the Trust by majority decision of the National Māori Art Form Committees at a general meeting.	All Toi Māori Limited directors are Trustees of the Governing Shareholder, Toi Māori Aotearoa (TMA).  The Constitution states that TML will have up to five Directors and at all times no fewer than three Directors that are also Trustees of the Governing Shareholder.	All Toi Māori Market Limited directors are also Trustees of Toi Māori Aotearoa (TMA).  The Constitution states that TMML will have up to five Directors and at all times no fewer than two Directors that are also Trustees of the Trust.

*This statement is to be read in conjunction with the notes to the Performance Report and accompanying audit report.*



Entity Information	TMA	TML	TMML
<b>Trustees/ Directors</b>	Trevor Maxwell (Chairperson) Tracey Morgan (Deputy Chair) Derek Lardelli (Te Pukonohi) Robert Gabel James George Ranui Ngarimu Rose Gould-Lardelli	Robert Gabel (Chairperson) Trevor Maxwell Tracey Morgan Ranui Ngarimu Rose Gould-Lardelli	Robert Gabel Trevor Maxwell Rose Gould-Lardelli
<b>Operational Structure</b>	TMA Trust operations are managed by a team of seven (7) paid employees: <ul style="list-style-type: none"> <li>• General Manager</li> <li>• Business Services &amp; Development Manager</li> <li>• Principal Advisor</li> <li>• Communication Designer</li> <li>• Business Services Accounts Administrator</li> <li>• Programme Coordinator</li> <li>• Part-time Programme Administrator</li> </ul>	Both Toi Māori Limited and Toi Māori Market Limited does not employ permanent personnel in its own right.  Personnel employed by the parent Toi Māori Aotearoa, (General Manager and Business Services & Development Manager), manage the activities of both companies.	
<b>Main Sources of Cash and Resources</b>	Toi Māori Trust received its revenue from government contracts for services that relates to the promotion and development of contemporary Māori arts.	TML and TMML main sources of funds comes from contracts for services with the central and local government for high profile and culturally significant events that showcase and promote contemporary Māori art.	
<b>Main Methods to Raise Funds</b>	TMA received funding from Creative New Zealand for the Totara Haemata Arts Leadership Programme, Revenue Generation and Māori Arts Internship Programme.  Fundings were received from the Ministry for Culture and Heritage Mātauranga Māori Marae Ora for Te Whakaaratamaiti Marae Project.	TML and TMML generate income and raise funds from artwork sales and Māori art project management.	
<b>Entities Reliance on Volunteers and Donated Goods or Services</b>	The Trustees, Chairs and members of the National Artform Committees provide voluntary services to the Trust.  Toi Māori received donations of \$1,576 from supporters and donors.	During this period, the Directors received no remuneration from the company. Company Directors donate their time, skills, and expertise.	

*This statement is to be read in conjunction with the notes to the Performance Report and accompanying audit report.*



<b><u>Additional Information:</u></b>	
<b>Auditors</b>	Stuart Duff Stuart Duff & Associates Limited 70 Nielsen Gardens, Rototuna Hamilton 3210 New Zealand
<b>Bankers:</b>	Bank of New Zealand Kiwibank
<b>Legal &amp; Business Advisors</b>	Roger Drummond (Barrister and Solicitor) Gibson Sheat Wellington
<b><u>Contact Details:</u></b>	
<b>Registered Office</b>	Level 4, Change House 150 Featherston Street, Wellington Central WELLINGTON 6011
<b>Postal Address</b>	PO Box 9570 Marion Square WELLINGTON 6141
<b>Phone</b>	04 801 7914
<b>Email</b>	<a href="mailto:admin@maoriart.org.nz">admin@maoriart.org.nz</a>
<b>Website</b>	<a href="http://www.maoriart.org.nz">www.maoriart.org.nz</a> <a href="http://www.maoriartmarket.com">www.maoriartmarket.com</a>

*This statement is to be read in conjunction with the notes to the Performance Report and accompanying audit report.*



**Toi Māori Aotearoa Group**  
**Statement of Service Performance**  
**For the Year Ended 31 December 2022**

**Outcomes:**

Toi Māori Aotearoa fostered the development of Māori art and artists, promoted Māori art and artists through exhibitions and digital networks, celebrated Māori art excellence, and engaged with partners across the arts and culture sector to provide advocacy and support to initiatives that advance Māori art development.

Toi Māori Aotearoa rigorously observed the Government’s COVID-19 Protection Framework. National event planning was disrupted by regional lockdowns and community transmission of COVID-19 impacted national and regional events with a high level of caution exercised for inter-generational gatherings and any event involving kaumatua. COVID-19 mitigation protocols for event logistics and planning, and reliance on local intelligence feed through the Toi Māori national network, resulted in the delivery of programmes involving regular smaller gatherings with digital communications offering both a quick adaptation tool and safeguard. Despite the relaxation of international border controls, the organisation took a measured approach to international exchange and began to increasingly participate in large public gatherings and plan international events with more confidence in the second half of the year.

Increased confidence in COVID-19 management saw an increase in engagements across the sector on proposals including international artist exchange, cultural diplomacy, government policy and initiatives, and skills training programmes.

**Outputs:**

Description and Quantification of Toi Māori Aotearoa’s Outputs	# of Attendees/ Participants	Audience
<b><u>He Kaupapa Waka:</u></b>		
Maumahara 1987: Ngatokimatawhaorua Waitangi ki Whangaroa: Supported the reunion of 100 kaihoe who crewed the great waka taua, Ngatokimatawhaorua, for the 1987 journey from Waitangi to Whangaroa Harbour. This reunion on 4 June 2022 at Otangaroa Marae saw kaihoe reconnect after thirty-five years to reflect on the significance of their endeavour and contribution to the resurgence of waka in Aotearoa.	200	Not Applicable
Te Hono ki Aotearoa kaihoe engagement, August 2022. The World Waka Ama Championships at Windsor, London, provided the first opportunity for Te Hono ki Aotearoa kaihoe to re-engage after COVID-19. Seasoned veterans, Robert Gabel, Rutene Gabel and Anaru Irwin met with Dutch kaihoe in London on 11 August 2022	10	Not Applicable
Four weekend wānanga were held at Ruaihona marae by Ngā Waka Toi to reconvene as a collective and invigorate waka practises in the Mataatua region from mid-August – mid-November 2022.	360	Not Applicable

*This statement is to be read in conjunction with the notes to the Performance Report and accompanying audit report.*



Description and Quantification of Toi Māori Aotearoa's Outputs	# of Attendees/ Participants	Audience
Ngā Waka Federation representatives worked with Te Papa on the development and supported the opening of the <i>Manu Rere Moana</i> and <i>He Kaupapa Waka</i> exhibitions at Te Papa Tongarewa on Friday 11 November 2022. A panel discussion on waka taua was held on Saturday 12 November 2022 at the Soundings Theatre.	430	5,000
<b><u>Te Ātinga:</u></b>		
Te Ātinga Ngā Pou Kōrero o Te Ao Toi was a programme of 13 online conversations with 40 well-established Māori and indigenous artists held weekly between 8 April – 29 July 2022, streamed live via the Te Ātinga Facebook platform and archived on the Te Ātinga YouTube Channel: <a href="#">Te Ātinga Toi Māori Korero Toi</a>	50	Not Applicable
Te Ātinga Whakawhanaungatanga Wānanga held on 6-8 May 2022 engaged the refreshed committee structure and leadership in long-term planning at Raglan Kōkiri Arts Centre, Whāingaroa.	45	Not Applicable
Five (5) Te Ātinga Hui-a-Rohe Wānanga, a year-long programme of regional wānanga engaged local Māori artist communities with the national Māori Visual Arts Committee:		
<ul style="list-style-type: none"> <li>Whanganui Te Ātinga Hui-a-Rohe Wānanga held on 9-10 July and incorporated the <i>Huritau</i> exhibition at the Whanganui Community Arts Centre.</li> </ul>	20	Not Applicable
<ul style="list-style-type: none"> <li>Waikato Te Ātinga Hui-a-Rohe Wānanga at Maungatautari marae, on 19-20 August 2022 in association with Toi ki Waikato.</li> </ul>	20	Not Applicable
<ul style="list-style-type: none"> <li>Waitangi Te Ātinga Hui-a-Rohe Wānanga on 10 September 2022 at Waitangi Museum.</li> </ul>	25	Not Applicable
<ul style="list-style-type: none"> <li>Rotorua Te Ātinga Hui-a-Rohe Wānanga held on 9 October 2022 at the Arts Village, Rotorua.</li> </ul>	20	Not Applicable
<ul style="list-style-type: none"> <li>Wairarapa Te Ātinga Hui-a-Rohe Wānanga held from 27-30 November 2022 at Te Whaiti Kohunui marae, Pirinoa, Wairarapa.</li> </ul>	30	Not Applicable

This statement is to be read in conjunction with the notes to the Performance Report and accompanying audit report.





Description and Quantification of Toi Māori Aotearoa's Outputs	# of Attendees/ Participants	Audience
Tū a Rangi moko Wānanga was held on 12 - 16 September 2022 at Toihoukura Māori Visual Art and Design School in Tairāwhiti. Members of Te Uhi a Mataora gathered to express their talent through the tradition of tā moko and shared ideas about the development of the moko movement.	75	Not Applicable
Ngā Kaihanga Uku wānanga held on 29-30 January 2022 at Tokomaru Bay for the book project "Nga Kaihanga Uku: Maori Clay Artists."	4	Not Applicable
Published Issue#77 of the Māori Weavers magazine in April 2022 with print-run of 250 copies distributed to registered members of Te Roopu Raranga Whatu o Aotearoa.	12	240
Te Hā o Ngā Pou Kaituhi Māori Co-Chairs Nadine Hura and Anahera Gildea curated a Māori Writers programme as part of the annual Verb Readers and Writers Festival, which was held at venues across Wellington City from 3 – 6 November 2022.	10	120
Provided support to 2022 Ringa Toi Student Exhibition held at The Museum of New Zealand Te Papa Tongarewa from 28 September - 9 October 2022. The exhibition featured 88 art works and introduced a new generation of artists working in raranga, whakairo, mahi-tā, whakapakoko and mahi-matahiko. There were 84 attendees at the opening of the Exhibition.	23 Participating schools 68 Student artists	Not Applicable
Provided sponsorship to Tipuārangi (Arts & Entertainment) award for Ngā Tohu Matariki o te Tau. Te Tumu Whakarae and Troy Kingi presented the 2022 Tipuārangi award to Rob Ruha on 15 June 2022 at Te Papa Tongarewa and televised live on Māori TV.	2	Not Applicable
Te Tumu Whakarae accepted the Ath Cup award on behalf of Rangi Kipa who was nominated for his significant design contributions to Te Whanganui-a-Tara at the NZIA Wellington Architecture Awards, Embassy Theatre on 30 June 2022.	4	450
At the invitation of the new U.S. Ambassador to New Zealand, Tom Udall and his wife Jill, Te Tumu Whakarae blessed a collection of contemporary Native American art loaned by the Tia Collection at the U.S. Ambassador's residence in Lower Hutt on 24 August 2022.	1	120
<b><u>Internship Programme:</u></b>		
Delivered four (4) internships for the 2022 Māori Arts Internship Programme: Alesha Ahdar at BATS Theatre, Wellington; Kurupae Rikihana at Maoriland Trust, Otaki; Ngahina Belton-Bodsworth at Te Matatiki Toi Ora, Ōtautahi; and Taniora Raniera Erihana Tamati-Rakete at The Physics Room, Ōtautahi.	4 Interns	Not Applicable
Hosted two (2) Te Herenga Waka Victoria University of Wellington Taihonoa Summer Interns, Riarna Vulu and Lily Kara-Liu.	2 Interns	Not Applicable

This statement is to be read in conjunction with the notes to the Performance Report and accompanying audit report.



Description and Quantification of Toi Māori Aotearoa's Outputs	# of Attendees/ Participants	Audience
<b><u>Toi Māori Exhibitions:</u></b>		
Whiriwhiria Exhibition held at Toi Māori Gallery from 11 March to 17 June 2022, curated by Pip Devonshire and showcased the latest weaving from a group of Māori weavers connected to the Kapiti Coast township of Ōtaki.	12	250
Exhibition at the Aotearoa Art Fair at The Cloud in Tāmaki Makaurau from 16 to 20 November 2022 featuring 31 artworks from 12 Māori artists and featured a Te Uhi a Mataora live demonstrations of tā moko.	24	8,831
<b><u>Sector engagements, advocacy and Māori art promotion:</u></b>		
Art form sector wānanga, sector engagements and hui with government agencies and arts organisations held throughout the year both held online and face to face within the COVID-19 travel and gathering restriction.	782	Not Applicable
Advocacy and promotion of Māori arts, artists, Toi Māori Group Leadership team through the Toi Māori website, online channels, and social media platforms: E-Newsletter subscribers Facebook followers Instagram followers Toi Māori website visitors	1,661 9,120 3,147 13,414	27,342

### **Toi Māori Limited Group Outputs:**

Exhibitions were held at Toi Māori Gallery in Wellington and at the Aotearoa Art Fair in Tāmaki Makaurau that promoted new and recent works by top Māori carvers, weavers, and clay artists.

With the implementation of the 2022 Protection Framework that restricts the number of attendees to gatherings and indoor events, Toi Māori held exhibitions on a small scale and implemented online promotion strategy that include the digital catalogue. Artworks were sold during these exhibitions and through Toi Māori online platform.

*This statement is to be read in conjunction with the notes to the Performance Report and accompanying audit report.*



**Additional Material:**

*"The show speaks to the excellence manifested over time by the intergenerational education programme established at Ōtaki. If you can make it into the gallery, you'll be rewarded with the aroma of harakeke."*

**-Nadine Rubin Nathan, Whiriwhiria Exhibition Coverage, 'Ōtaki weavers show ambitious new work in "Whiriwhiria" exhibition', Stuff 21 May 2022**

*"Stunning beautiful weaving. The aroha shines through the mahi."*

**-Visitor comment, Whiriwhiria Exhibition, 16 June 2022**

*"Our thanks to you all at Toi Māori for enabling us to work with Alesha ... We really valued the opportunity to frame an internship in a key development area for the sector. BATS is delighted to have employed Alesha following the internship as our new Programmer."*

**-Jonathon Hendry, Chief Executive, BATS Theatre  
2021-22 MAI Programme Host, Post-Internship Evaluation, 2 June 2022**

*"[Robert] Jahnke [Art Fair Trustee] said that this is the first time that Toi Māori has been involved which he considers a significant step because of the exposure of contemporary Māori art of today to the local populace and the visiting international audience."*

**-Te Ao Māori News, 'Artist Fred Graham's new Kaitiaki at the Aotearoa Art Fair | Te Ao Tapatahi', 19 November 2022**

*"Toi Māori Aotearoa showed Lewis Gardiner's potent pounamu and whalebone weaponry, Sonia Snowden's superstar kete whakairo and Rānui Ngārimu's luscious houhere bark vessel, among other ringatoi Māori ... This is the first year Toi Māori Aotearoa have had a stall at the fair, and what a success to see such a strong toi Māori contingent."*

**- Mya Morrison-Middleton, 'Highlights and Reflections on the Aotearoa Art Fair', *The Pantograph Punch*, published 9 December 2022**



**Toi Māori Aotearoa Group**  
**Statement of Financial Performance**  
**For the Year Ended 31 December 2022**

	Note	2022	2022	2022	2021	2021	2021
		Toi Maori Aotearoa Parent \$	Toi Maori Ltd Group Subsidiary \$	Group Total \$	Toi Maori Aotearoa Parent \$	Toi Maori Ltd Group Subsidiary \$	Group Total \$
<b>Revenue</b>							
Donations, fundraising and other similar revenue	1.1	1,576	1	1,577	4,642	3	4,645
Fees, subscriptions and other revenue from members	1.2	10,757	-	10,757	10,078	-	10,078
Revenue from providing goods or services	1.3	924,248	20,849	945,097	943,468	15,161	958,629
Interest revenue		24,211	6,177	30,388	7,543	2,357	9,900
<b>Total Revenue</b>		<b>960,792</b>	<b>27,027</b>	<b>987,819</b>	<b>965,731</b>	<b>17,521</b>	<b>983,252</b>
<b>Expenses</b>							
Volunteer and employee related costs	2.1	464,904	-	464,904	463,685	-	463,685
Costs related to providing goods or services	2.2	377,405	13,833	391,238	486,297	11,006	497,303
Other expenses	2.3	6,020	-	6,020	6,291	-	6,291
<b>Total Expenses</b>		<b>848,329</b>	<b>13,833</b>	<b>862,162</b>	<b>956,273</b>	<b>11,006</b>	<b>967,279</b>
<b>Surplus/(Deficit) for the Year</b>		<b>112,463</b>	<b>13,194</b>	<b>125,657</b>	<b>9,458</b>	<b>6,515</b>	<b>15,973</b>

This statement is to be read in conjunction with the notes to the Performance Report and accompanying audit report.



## Toi Māori Aotearoa Group

### Statement of Financial Position As at 31 December 2022

	Note	2022			2021		
		Toi Maori Aotearoa Parent	Toi Maori Ltd Group Subsidiary	Toi Maori Aotearoa Group Total	Toi Maori Aotearoa Parent	Toi Maori Ltd Group Subsidiary	Toi Maori Aotearoa Group Total
		\$	\$	\$	\$	\$	\$
<b>Assets</b>							
<b>Current Assets</b>							
Bank accounts and cash	3.1	234,672	91,456	326,128	270,566	87,070	357,636
Debtors and prepayments	3.2	54,110	3,561	57,671	43,086	2,171	45,257
Inventory	3.3	-	62,979	62,979	-	64,679	64,679
Other current assets	3.4	1,200,000	254,213	1,454,213	1,000,000	249,740	1,249,740
<b>Total Current Assets</b>		<b>1,488,782</b>	<b>412,209</b>	<b>1,900,991</b>	<b>1,313,652</b>	<b>403,660</b>	<b>1,717,312</b>
<b>Non-Current Assets</b>							
Property, plant and equipment	4	47,862	86,200	134,062	50,655	86,200	136,855
Investments	3.5	100,000	50,000	150,000	100,000	50,000	150,000
<b>Total Non-Current Assets</b>		<b>147,862</b>	<b>136,200</b>	<b>284,062</b>	<b>150,655</b>	<b>136,200</b>	<b>286,855</b>
<b>Total Assets</b>		<b>1,636,644</b>	<b>548,409</b>	<b>2,185,053</b>	<b>1,464,307</b>	<b>539,860</b>	<b>2,004,167</b>
<b>Liabilities</b>							
<b>Current Liabilities</b>							
Creditors and accrued expenses	3.6	30,362	5,512	35,874	49,870	6,820	56,690
Employee costs payable	3.7	74,648	-	74,648	72,202	-	72,202
Unused donations and grants with conditions	3.8	442,544	17,942	460,486	370,964	21,279	392,243
Other current liabilities	3.9	31,523	-	31,523	26,167	-	26,167
<b>Total Current Liabilities</b>		<b>579,077</b>	<b>23,454</b>	<b>602,531</b>	<b>519,203</b>	<b>28,099</b>	<b>547,302</b>
<b>Total Liabilities</b>		<b>579,077</b>	<b>23,454</b>	<b>602,531</b>	<b>519,203</b>	<b>28,099</b>	<b>547,302</b>
<b>Total Assets less Total Liabilities (Net Assets)</b>		<b>1,057,567</b>	<b>524,955</b>	<b>1,582,522</b>	<b>945,104</b>	<b>511,761</b>	<b>1,456,865</b>
<b>Accumulated Funds</b>							
Capital contributed by owners or members	5.1	-	150,000	150,000	-	150,000	150,000
Accumulated surpluses or (deficits)		1,057,567	228,950	1,286,517	945,104	218,718	1,163,822
Reserves	5.2	-	146,005	146,005	-	143,043	143,043
<b>Total Accumulated Funds</b>	5	<b>1,057,567</b>	<b>524,955</b>	<b>1,582,522</b>	<b>945,104</b>	<b>511,761</b>	<b>1,456,865</b>

Trustee   
Trevor Maxwell

Date 14 April 2023

Trustee   
Robert Gabel

Date 14 April 2023

This statement is to be read in conjunction with the notes to the Performance Report and accompanying audit report.



**Toi Māori Aotearoa Group**  
**Statement of Cash Flows**  
**For the Year Ended 31 December 2022**

	2022 Toi Maori Aotearoa Parent \$	2022 Toi Maori Ltd Group Subsidiary \$	2022 Group Total \$	2021 Toi Maori Aotearoa Parent \$	2021 Toi Maori Ltd Group Subsidiary \$	2021 Group Total \$
<b>Cash Flows from Operating Activities</b>						
<b>Cash was received from:</b>						
Donations, fundraising and other similar receipts	1,576	1	1,577	4,642	3	4,645
Fees, subscriptions and other receipts from members	887	-	887	36,348	-	36,348
Receipts from providing goods or services	1,027,703	49,451	1,077,154	1,141,607	33,854	1,175,461
Interest, dividends and other investment receipts	16,183	5,351	21,534	7,483	3,059	10,542
Net GST	(3,264)	(333)	(3,597)	25,352	856	26,208
<b>Cash was applied to:</b>						
Payments to suppliers and employees	875,752	45,611	921,363	905,633	29,348	934,981
<b>Net Cash Flows from Operating Activities</b>	<b>167,333</b>	<b>8,859</b>	<b>176,192</b>	<b>309,799</b>	<b>8,424</b>	<b>318,223</b>
<b>Cash flows from Investing and Financing Activities</b>						
<b>Cash was received from:</b>						
Receipts from the sale of investments	-	-	-	-	-	-
<b>Cash was applied to:</b>						
Payments to acquire property, plant and equipment	3,227	-	3,227	6,145	-	6,145
Payments to purchase investments	200,000	4,473	204,473	200,000	2,896	202,896
<b>Net Cash Flows from Investing and Financing Activities</b>	<b>(203,227)</b>	<b>(4,473)</b>	<b>(207,700)</b>	<b>(206,145)</b>	<b>(2,896)</b>	<b>(209,041)</b>
<b>Net Increase / (Decrease) in Cash</b>	<b>(35,894)</b>	<b>4,386</b>	<b>(31,508)</b>	<b>103,654</b>	<b>5,528</b>	<b>109,182</b>
Opening Cash	270,566	87,070	357,636	166,912	81,542	248,454
Closing Cash	234,672	91,456	326,128	270,566	87,070	357,636
<b>This is represented by:</b>						
Bank Accounts and Cash	234,672	91,456	326,128	270,566	87,070	357,636

This statement is to be read in conjunction with the notes to the Performance Report and accompanying audit report.



# TOI MĀORI AOTEAROA GROUP

## Statement of Accounting Policies For the Year Ended 31 December 2022

### 1. REPORTING ENTITY

Toi Māori Aotearoa – Māori Arts New Zealand Charitable Trust (the "Trust" or "Parent") is a Charitable Trust incorporated under the Charitable Trust Act 1957 and registered with the NZ Charities Commission. The Trust was established on the 14th of October 1996.

Financial Statements for Toi Māori Aotearoa Charitable Trust and consolidated financial statements are presented (the "Group"). The consolidated financial statements comprise the Trust and its subsidiary Toi Māori Ltd. Toi Māori Aotearoa Group (Registration Number CC54639) was registered on 28 June 2017.

Toi Māori Limited is a wholly owned entity of the Trust and was incorporated on the 25th of May 2005 under the Companies Act 1993. The company is also registered with the NZ Charities Commission.

The Trust and Group is a reporting entity for the purposes of the Financial Reporting Act 1993. The financial statements and the Group financial statements are presented in accordance with the Act and with New Zealand Generally Accepted Accounting Practice (NZGAAP).

### 2. BASIS OF PREPARATION

Toi Māori Aotearoa Group has elected to apply PBE SFR-A (NFP) Public Benefit Entity Simple Format Reporting - Accrual (Not-For-Profit) on the basis that it does not have public accountability and has total annual expenses of equal to or less than \$2,000,000.

All transactions in the Performance Report are reported using the accrual basis of accounting.

The Performance Report is prepared under the assumption that the entity will continue to operate in the foreseeable future.

#### **Basis of measurement**

These financial statements are prepared on the historical cost basis.

#### **Presentation currency**

These financial statements are presented in New Zealand dollars (\$).

### 3. BASIS OF CONSOLIDATION

Subsidiaries are those entities controlled, directly or indirectly, by the Trust. The financial statements of the subsidiaries are included in the financial statements using the purchase method of consolidation.

The effects of intra-group are eliminated in preparing the consolidated financial statements.



**Toi Māori Aotearoa Group**  
**Statement of Accounting Policies**  
**For the Year Ended 31 December 2022**

**4. SIGNIFICANT ACCOUNTING POLICIES**

This set of financial statements was prepared using the new PBE SFR-A (NFP) Public Benefit Entity Simple Format Reporting - Accrual (Not-For-Profit).

The following specific accounting policies which materially affect the measurement of financial performance and financial position have been applied.

**4.1 Receivables**

Receivables are stated at their estimated realisable value.

**4.2 Fixed Assets and Depreciation**

The waka, Hinemoana Waka and waka taua, Te Hono Ki Aotearoa have been determined to have an unlimited useful life on the basis that they are heritage assets, hence there is no depreciation charge.

Depreciation is provided on tangible fixed assets at the rates permitted under the Income Tax Act 1976 and as shown in the Fixed Assets and Depreciation Schedule.

The following rates have been applied:

- Computer Equipment 40% - 48% diminishing value
- Office Equipment 40% - 60% diminishing value
- Furniture & Fittings 33% - 40% diminishing value
- Event Equipment 11% - 33% diminishing value

**4.3 Grants**

Grants received which contribute to revenue, are recognised in the Statement of Financial Performance as soon as any obligations affecting the grants have been met.

**4.4 Investments**

Investments are stated at cost or impaired value.

**4.5 Financial Instruments**

Toi Māori Aotearoa is party to financial instrument arrangements, as part of its everyday operations, which have been recognised in the financial statements. Revenue and expenditure in relation to all financial instruments are recognised in the financial statements.

**4.6 Goods and Services Tax**

All amounts are shown exclusive of Goods and Services Tax (GST), except for receivables and payables that are stated inclusive of GST.





**Toi Māori Aotearoa Group**  
**Statement of Accounting Policies**  
**For the Year Ended 31 December 2022**

**4.7 Revenue**

Revenue comprises of the amounts received for goods, services & grants in the ordinary course of the Trust and subsidiary companies' activities.

Revenue is recorded when earned based on percentage of work completed. Any amounts received in relation to work not yet completed are recorded as Income in Advance.

**5. CHANGES IN ACCOUNTING POLICIES**

There have been no changes to the accounting policies used in previous years.

**6. INCOME TAX STATUS**

Toi Māori Aotearoa – Māori Arts New Zealand Charitable Trust and its wholly owned subsidiaries have been granted charitable status for income tax purposes, under Section CB4(1)(a) and (e) of the Income Tax Act 2004.

The three entities are registered charities with Charities Commission and have fully complied with all statutory conditions for tax exemptions.

**7. DONATIONS**

During the period, the Trust and subsidiary companies have made no donations.



**Toi Māori Aotearoa Group**  
**Notes to the Performance Report**  
**For the Year Ended 31 December 2022**

**Note 1 : Analysis of Revenue**

		2022	2022	2021	2021
		Toi Maori Aotearoa	Toi Maori Ltd Group	Toi Maori Aotearoa	Toi Maori Ltd Group
		Parent	Subsidiary	Parent	Subsidiary
1.1. Revenue Item	Analysis	\$	\$	\$	\$
Donations and other similar revenue	Donations to Toi Maori Aotearoa	1,576	1	4,642	3
	<b>Total</b>	<b>1,576</b>	<b>1</b>	<b>4,642</b>	<b>3</b>

		2022	2022	2021	2021
		\$	\$	\$	\$
1.2. Revenue Item	Analysis				
Fees, subscriptions and other revenue from	Fees and subscriptions from members	10,757	-	10,078	-
	<b>Total</b>	<b>10,757</b>	<b>-</b>	<b>10,078</b>	<b>-</b>

		2022	2022	2021	2021
		\$	\$	\$	\$
1.3. Revenue Item	Analysis				
Revenue from providing goods or services	Creative New Zealand (CNZ) Totara Haemata Arts Leadership Programme	717,600	-	711,500	-
	CNZ (Revenue Generation, MAI Internship & other contracts for services)	167,821	-	169,248	-
	Ministry for Culture and Heritage (MCH) Marae Ora Grant	19,000	-	9,000	-
	Te Puni Kokiri (TPK)	-	3,336	5,000	-
	Blumhardt Foundation sponsorship	-	-	5,000	-
	Services to Non-Government Agencies	19,466	-	43,378	-
	Commission Revenue	-	14,643	-	13,209
	Artworks, books, tickets sales and hui registration	361	2,870	342	1,952
	<b>Total</b>	<b>924,248</b>	<b>20,849</b>	<b>943,468</b>	<b>15,161</b>

**Toi Māori Aotearoa Group**  
**Notes to the Performance Report**  
**For the Year Ended 31 December 2022**

**Note 2 : Analysis of Expenses**

		2022	2022	2021	2021
		Toi Maori Aotearoa Parent	Toi Maori Ltd Group Subsidiary	Toi Maori Aotearoa Parent	Toi Maori Ltd Group Subsidiary
<b>2.1. Expense Item</b>	<b>Analysis</b>	\$	\$	\$	\$
Volunteer and employee related costs	Salaries and wages	449,900	-	443,062	-
	KiwiSaver contributions	13,767	-	11,838	-
	ACC levies	1,218	-	1,220	-
	Staff Training	-	-	490	-
	Staff Recruitment	19	-	7,075	-
	<b>Total</b>		<b>464,904</b>	<b>-</b>	<b>463,685</b>
<b>2.2. Expense Item</b>	<b>Analysis</b>	2022 \$	2022 \$	2021 \$	2021 \$
Costs related to providing goods or services	Direct costs relating to service delivery	256,251	5,243	365,702	982
	Administration and Overhead costs	84,094	681	80,749	627
	Compliance and Risk Management	15,325	7,909	13,410	9,397
	Governance Costs	21,735	-	26,436	-
<b>Total</b>		<b>377,405</b>	<b>13,833</b>	<b>486,297</b>	<b>11,006</b>
<b>2.3. Expense Item</b>	<b>Analysis</b>	2022 \$	2022 \$	2021 \$	2021 \$
Other expenses	Depreciation	5,905	-	5,993	-
	Loss on sale of disposal of assets	115	-	298	-
<b>Total</b>		<b>6,020</b>	<b>-</b>	<b>6,291</b>	<b>-</b>



## Toi Māori Aotearoa Group

### Notes to the Performance Report For the Year Ended 31 December 2022

#### Note 3 : Analysis of Assets and Liabilities

		2022	2022	2021	2021
		Toi Maori Aotearoa	Toi Maori Ltd Group	Toi Maori Aotearoa	Toi Maori Ltd Group
3.1. Asset Item	Analysis	Parent	Subsidiary	Parent	Subsidiary
Bank accounts and cash	BNZ Cheque Account	9,181	21,044	21,036	14,262
	BNZ Savings Account	17,742	-	17,660	-
	BNZ First on Call Account	21,924	-	21,822	-
	BNZ Call Account	185,725	20,685	209,948	20,589
	Kiwi Bank Cheque Account	-	1,429	-	1,688
	Kiwi Bank Call Account	-	48,198	-	50,431
	Petty Cash	100	100	100	100
	<b>Total</b>		<b>234,672</b>	<b>91,456</b>	<b>270,566</b>

		2022	2022	2021	2021	
		\$	\$	\$	\$	
3.2. Asset Item	Debtors and prepayments	Accounts Receivable	23,311	-	25,450	
		Receivable-Toi Maori Limited	-	-	56	
		Interest Receivable	10,145	1,869	2,117	1,044
		GST Receivable	8,457	424	7,867	-
		Prepayment	12,197	1,268	7,596	1,183
		<b>Total</b>		<b>54,110</b>	<b>3,561</b>	<b>43,086</b>

		2022	2022	2021	2021
		\$	\$	\$	\$
3.3. Asset Item	Inventory	Small Treasures Artwork	-	40,979	-
		Toi Maori Market Artwork	-	22,000	-
		<b>Total</b>		<b>-</b>	<b>62,979</b>

		2022	2022	2021	2021	
		\$	\$	\$	\$	
3.4. Asset Item	Other current assets	BNZ Term Deposit-3007	100,000	-	100,000	
		BNZ Term Deposit-3008	100,000	-	100,000	
		BNZ Term Deposit-3009	100,000	-	100,000	
		BNZ Term Deposit-3010	100,000	-	100,000	
		BNZ Term Deposit-3012	100,000	-	100,000	
		BNZ Term Deposit-3013	100,000	-	100,000	
		BNZ Term Deposit-3014	100,000	-	100,000	
		BNZ Term Deposit-3015	100,000	-	100,000	
		BNZ Term Deposit-3016	100,000	-	100,000	
		BNZ Term Deposit-3017	100,000	-	100,000	
		BNZ Term Deposit-3018	100,000	-	-	
		BNZ Term Deposit-3019	100,000	-	-	
		BNZ Term Deposit-0003-Waka Reserves	-	144,204	-	142,423
		BNZ Term Deposit-0005	-	110,009	-	107,317
<b>Total</b>		<b>1,200,000</b>	<b>254,213</b>	<b>1,000,000</b>	<b>249,740</b>	

		2022	2022	2021	2021
		\$	\$	\$	\$
3.5. Asset Item	Investments	Shares- Toi Maori Limited	100,000	-	100,000
		Shares- Toi Maori Market Limited	-	50,000	-
		<b>Total</b>	<b>100,000</b>	<b>50,000</b>	<b>100,000</b>



**Toi Māori Aotearoa Group**  
**Notes to the Performance Report**  
**For the Year Ended 31 December 2022**

**Note 3 : Analysis of Assets and Liabilities**

		2022	2022	2021	2021
		Toi Maori Aotearoa	Toi Maori Ltd Group	Toi Maori Aotearoa	Toi Maori Ltd Group
3.6. Liability Item	Analysis	Parent	Subsidiary	Parent	Subsidiary
Creditors and accrued expenses	Accrued Expenses	22,621	5,044	17,344	6,654
	Trade and Other Payables	7,741	-	32,526	-
	GST Payable	-	468	-	166
	<b>Total</b>	<b>30,362</b>	<b>5,512</b>	<b>49,870</b>	<b>6,820</b>

		2022	2022	2021	2021
		\$	\$	\$	\$
3.7. Liability Item Employee costs payable	Wages and salaries Payable	22,918	-	19,468	-
	Holiday Pay Accrual	36,387	-	28,820	-
	Withholding Tax Payable	200	-	3,750	-
	PAYE & Student Loan Payable	12,227	-	16,611	-
	KiwiSaver Payable	2,567	-	3,154	-
	Other deductions	349	-	399	-
	<b>Total</b>	<b>74,648</b>	<b>-</b>	<b>72,202</b>	<b>-</b>

		2022	2022	2021	2021
		\$	\$	\$	\$
3.8. Liability Item Unused donations and grants with conditions	Creative New Zealand (CNZ) Totara Haemata Arts Leadership Programme	322,900	-	235,500	-
	CNZ Revenue Generation	95,375	-	95,375	-
	Ministry for Culture and Heritage Marae Ora Grant	-	-	19,000	-
	Unused Donations-Scholarship Fund-Tepene Mamaku	21,089	-	21,089	-
	Embassy of the Netherlands Grant for Te Hono Kaihoe exchange	3,180	-	-	-
	TPK-Maori Market Research	-	6,356	-	6,356
	TPK-Maori Publication	-	11,586	-	14,923
	<b>Total</b>	<b>442,544</b>	<b>17,942</b>	<b>370,964</b>	<b>21,279</b>

		2022	2022	2021	2021
		\$	\$	\$	\$
3.9. Liability Item Other current liabilities	Income in Advance-Weavers Membership	217	-	10,087	-
	Writers and Weavers National Hui Registrations paid in advance	15,306	-	16,080	-
	Massey University Public Art Heritage Liaison	10,000	-	-	-
	Victoria University of Wellington Taihonoa Internship	6,000	-	-	-
	<b>Total</b>	<b>31,523</b>	<b>-</b>	<b>26,167</b>	<b>-</b>



**Toi Māori Aotearoa Group**  
**Notes to the Performance Report**  
**For the Year Ended 31 December 2022**

**Note 4 : Property, Plant and Equipment**

**Toi Māori Aotearoa (Parent)**

2022					
Asset Class	Opening Carrying Amount	Purchases	Sales/Disposals	Current Year Depreciation and Impairment	Closing Carrying Amount
Motor Vehicles-Waka Trailer	187			41	146
Furniture and fixtures	2,057			679	1,378
Office equipment	1,867	3,227		1,405	3,689
Computers (including software)	9,241	-	115	3,689	5,437
Event Equipment	777			91	686
Heritage assets	36,526				36,526
<b>Total</b>	<b>50,655</b>	<b>3,227</b>	<b>115</b>	<b>5,905</b>	<b>47,862</b>

2021					
Asset Class	Opening Carrying Amount	Purchases	Sales/Disposals	Current Year Depreciation and Impairment	Closing Carrying Amount
Motor Vehicles-Waka Trailer	240			53	187
Furniture and fixtures	3,071			1,014	2,057
Office equipment	1,437	1,999	195	1,374	1,867
Computers (including software)	8,647	4,146	103	3,449	9,241
Event Equipment	880			103	777
Heritage assets	36,526				36,526
<b>Total</b>	<b>50,801</b>	<b>6,145</b>	<b>298</b>	<b>5,993</b>	<b>50,655</b>

**Toi Maori Aotearoa Group**

2022					
Asset Class	Opening Carrying Amount	Purchases	Sales/Disposals	Current Year Depreciation and Impairment	Closing Carrying Amount
Motor Vehicles-Waka Trailer	187			41	146
Furniture and fixtures	2,058			679	1,379
Office equipment	1,866	3,227		1,405	3,688
Computers (including software)	9,241	-	115	3,689	5,437
Event Equipment	777			91	686
Heritage assets	122,726				122,726
<b>Total</b>	<b>136,855</b>	<b>3,227</b>	<b>115</b>	<b>5,905</b>	<b>134,062</b>

2021					
Asset Class	Opening Carrying Amount	Purchases	Sales/Disposals	Current Year Depreciation and Impairment	Closing Carrying Amount
Motor Vehicles-Waka Trailer	240			53	187
Furniture and fixtures	3,071			1,013	2,058
Office equipment	1,437	1,999	195	1,375	1,866
Computers (including software)	8,647	4,146	103	3,449	9,241
Event Equipment	880			103	777
Heritage assets	122,726				122,726
<b>Total</b>	<b>137,001</b>	<b>6,145</b>	<b>298</b>	<b>5,993</b>	<b>136,855</b>



**Toi Māori Aotearoa Group**  
**Notes to the Performance Report**  
**For the Year Ended 31 December 2022**

**Note 5: Accumulated Funds**

**Toi Māori Aotearoa (Parent)**

2022				
Description	Capital Contributed by Owners or Members	Accumulated Surpluses or Deficits	Reserves	Total
Opening Balance	-	945,104	-	945,104
Capital contributed by owners or members	-			-
Capital returned to owners or members	-			-
Surplus/(Deficit)		112,463		112,463
Distributions paid to owners or members		-		-
Transfer to Reserves		-	-	
Transfer from Reserves		-	-	
Closing Balance	-	1,057,567	-	1,057,567

2021				
Description	Capital Contributed by Owners or Members	Accumulated Surpluses or Deficits	Reserves	Total
Opening Balance		935,646	-	935,646
Capital contributed by owners or members				-
Capital returned to owners or members				-
Surplus/(Deficit)		9,458		9,458
Distributions paid to owners or members		-		-
Transfer to Reserves		-	-	
Transfer from Reserves		-	-	
Closing Balance	-	945,104	-	945,104

**5.1. SHARE CAPITAL –TOI MĀORI LIMITED GROUP**

At 31 December 2022, share capital of Toi Māori Limited comprised of 100,000 ordinary shares (2021: 100,000). Toi Māori Market Limited share capital comprised of 50,000 ordinary shares (2021: 50,000). All issued shares are fully paid at balance date.

All shares have equal rights and share equally in dividend and surplus on winding up.

**5.2. GENERAL WAKA RESERVE – TOI MĀORI LIMITED GROUP**

A General Waka Reserve has been set up to cover ongoing maintenance costs, training and travel costs to inspect the Waka whilst on loan to Museum Volkenkunde in Leiden, Netherlands.

An allocation of \$100,000 has been made in 2010 for these future costs. Fund has been invested in Term Deposit and has earned interest of \$2,962 in 2022. Total accumulated interest as of the end of the year is \$46,005.

Breakdown of Reserves		
Name	2022	2021
	\$	\$
General Waka Reserve	146,005	143,043
<b>Total</b>	<b>146,005</b>	<b>143,043</b>



**Toi Māori Aotearoa Group**  
**Notes to the Performance Report**  
**For the Year Ended 31 December 2022**

**Note 6 : Commitments and Contingencies**

Commitment	Explanation and Timing	2022	2021
		\$	\$
Commitments to lease or rent assets	<b>Sharp Corporation- 48 month Lease Term commencing 01 April 2021</b>		
	Current Portion	1,791	1,343
	Non Current Portion	4,029	5,820

**Note 7 : Donated Services**

The work of Toi Māori Aotearoa is dependent on the voluntary services of many members including the Trustees who received no remuneration during the year and members of the ten art form committees. Since these services are not normally purchased by Toi Māori Aotearoa and due to the difficulty in determining their value with reliability, donated services are not recognised in these financial statements.

**Note 8 : Assets Held on Behalf of Others**

A number of artworks are held on loan at the premises of Toi Māori Aotearoa from Darcy Nicholas, Rangi Kipa, Garry Nicholas and Maria Waterhouse.

There are a number of artworks gifted to the various National Art form Committees and the Toi Māori office.

**Note 9 : Related Party Transactions**

**Advance from Toi Māori Aotearoa**

Toi Māori Aotearoa is the parent company of Toi Māori Limited. All directors of Toi Māori Limited are also Trustees of Toi Māori Aotearoa.

Toi Māori Market Ltd is a wholly owned subsidiary of Toi Māori Limited.

	2022	2022	2021	2021
	Toi Maori Limited Parent \$	Toi Maori Market Subsidiary \$	Toi Maori Limited Parent \$	Toi Maori Market Subsidiary \$
Advance from Toi Maori Aotearoa	-	-	56	-
	-	-	56	-





**Toi Māori Aotearoa Group**  
**Notes to the Performance Report**  
**For the Year Ended 31 December 2022**

**Note 10 : Events After the Balance Date**

New Zealand's COVID-19 Protection Framework or the Traffic Lights system has ended, and most COVID-19 rules were removed on 13 September 2022.

There have been no significant events subsequent to the balance date and up to the time of the completion of these financial statements that materially affect the position as it existed at that date.



## INDEPENDENT AUDITORS' REPORT

To the Beneficiaries of Tōi Māori Aotearoa Group

### Opinion

We have audited the performance report of Tōi Māori Aotearoa Group on pages 2 to 23, which comprises entity information, the statement of service performance, the statement of financial performance and statement of cash flows for the year ended 31 December 2022; and the statement of financial position as at 31 December 2022, the statement of accounting policies and other explanatory information.

In our opinion:

- a) the reported outcomes and outputs, and quantification of the outputs to the extent practicable, in the statement of service performance are suitable;
  
- b) the performance report on pages 2 to 23 presents fairly, in all material respects:
  - the entity information for the year ended 31 December 2022;
  - the service performance for the year then ended; and
  - the financial position of Tōi Māori Aotearoa Group as at 31 December 2022, and its financial performance, and cash flows for the year then ended in accordance with Public Benefit Entity Simple Format Reporting Accrual (Not-For-Profit).

### Basis for Opinion

We conducted our audit of the statement of financial performance, statement of financial position, statement of cash flows, statement of accounting policies and notes to the performance report in accordance with International Standards on Auditing (New Zealand) (ISAs (NZ)), and the audit of the entity information and statement of service performance in accordance with the International Standard on Assurance Engagements (New Zealand) ISAE (NZ) 3000 (Revised). Our responsibilities under those standards are further described in the Auditors' Responsibilities for the Audit of the Performance Report section of our report. We are independent of Tōi Māori Aotearoa Group in accordance with Professional and Ethical Standard 1 (Revised) Code of Ethics for Assurance Practitioners issued by the New Zealand Auditing and Assurance Standards Board, and we have fulfilled our other ethical responsibilities in accordance with these requirements. We believe that the audit evidence we have obtained is sufficient and appropriate to provide a basis for our opinion.



Other than in our capacity as auditor we have no relationship with, or interests in, Tōi Māori Aotearoa Group.

### **Restriction on Responsibility**

This report is made solely to the beneficiaries, as a body, in accordance with section 42F of the Charities Act 2005. Our audit work has been undertaken so that we might state to the beneficiaries those matters we are required to state to them in an auditor's report and for no other purpose. To the fullest extent permitted by law, we do not accept or assume responsibility to anyone other than the beneficiaries as a body, for our audit work, for this report, or for the opinions we have formed.

### **Boards' Responsibility for the Performance Report**

The Board is responsible on behalf of the entity for:

- (a) identifying outcomes and outputs, and quantifying the outputs to the extent practicable, that are relevant, reliable, comparable and understandable, to report in the statement of service performance;
- (b) the preparation and fair presentation of the performance report which comprises:
  - the entity information;
  - the statement of service performance; and
  - the statement of financial performance, statement of financial position, statement of cash flows, statement of accounting policies and notes to the performance report in accordance with Public Benefit Entity Simple Format Reporting Accrual (Not-For Profit) issued in New Zealand by the New Zealand Accounting Standards Board, and;
- (c) for such internal control as the Board determine is necessary to enable the preparation of a performance report that is free from material misstatement, whether due to fraud or error.

In preparing the performance report, the Board is responsible on behalf of the entity for assessing the entity's ability to continue as a going concern, disclosing, as applicable, matters related to going concern and using the going concern basis of accounting unless the Board either intend to liquidate the entity or to cease operations, or have no realistic alternative but to do so.

### **Auditors' Responsibilities for the Audit of the Performance Report**

Our objectives are to obtain reasonable assurance about whether the performance report is free from material misstatement, whether due to fraud or error, and to issue an auditor's report that includes our opinion. Reasonable assurance is a high level of assurance, but is not a guarantee that an audit conducted in accordance with ISAs (NZ) and ISAE (NZ) 3000 (Revised) will always detect a material misstatement when it exists. Misstatements can arise from fraud or error and are considered material if, individually or in the aggregate, they could reasonably be expected to influence the decisions of users taken on the basis of this performance report.

As part of an audit in accordance with ISAs (NZ), we exercise professional judgement and maintain professional scepticism throughout the audit. We also:

- Identify and assess the risks of material misstatement of the performance report, whether due to fraud or error, design and perform audit procedures responsive to those risks, and obtain audit evidence that is sufficient and appropriate to provide a basis for our opinion. The risk of not detecting a material misstatement resulting from fraud is higher than for one resulting from error, as fraud may involve collusion, forgery, intentional omissions, misrepresentations, or the override of internal control.
- Obtain an understanding of internal control relevant to the audit in order to design audit procedures that are appropriate in the circumstances, but not for the purpose of expressing an opinion on the effectiveness of the entity's internal control.
- Evaluate the appropriateness of accounting policies used and the reasonableness of accounting estimates and related disclosures made by management.
- Conclude on the appropriateness of the use of the going concern basis of accounting by the Board and, based on the audit evidence obtained, whether a material uncertainty exists related to events or conditions that may cast significant doubt on the entity's ability to continue as a going concern. If we conclude that a material uncertainty exists, we are required to draw attention in our auditor's report to the related disclosures in the performance report or, if such disclosures are inadequate, to modify our opinion. Our conclusions are based on the audit evidence obtained up to the date of our auditor's report. However, future events or conditions may cause the entity to cease to continue as a going concern.
- Evaluate the overall presentation, structure and content of the performance report, including the disclosures, and whether the performance report represents the underlying transactions and events in a manner that achieves fair presentation.
- Perform procedures to obtain evidence about and evaluate whether the reported outcomes and outputs, and quantification of the outputs to the extent practicable, are relevant, reliable, comparable and understandable.

We communicate with the Board regarding, among other matters, the planned scope and timing of the audit and significant audit findings, including any significant deficiencies in internal control that we identify during our audit.

*Stuart Duff & Associates*

Stuart Duff & Associates

Hamilton

01 May 2023